



Product catalogue

WINCHES FOR INDUSTRIAL CARS
ATV
UTV

INDUSTRIAL WINCHES
HAND CRANK WINCHES
ACCESSORIES

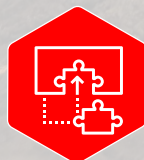
What makes **DRAGON WINCH** exceptional?



**EXTREME
QUALITY**



**OWN RESEARCH
AND DEVELOPMENT**



**INNOVATIVE
SOLUTIONS**

**THE LARGEST SELECTION
OF WINCHES ON THE MARKET**



**PROFESSIONAL
SERVICES**



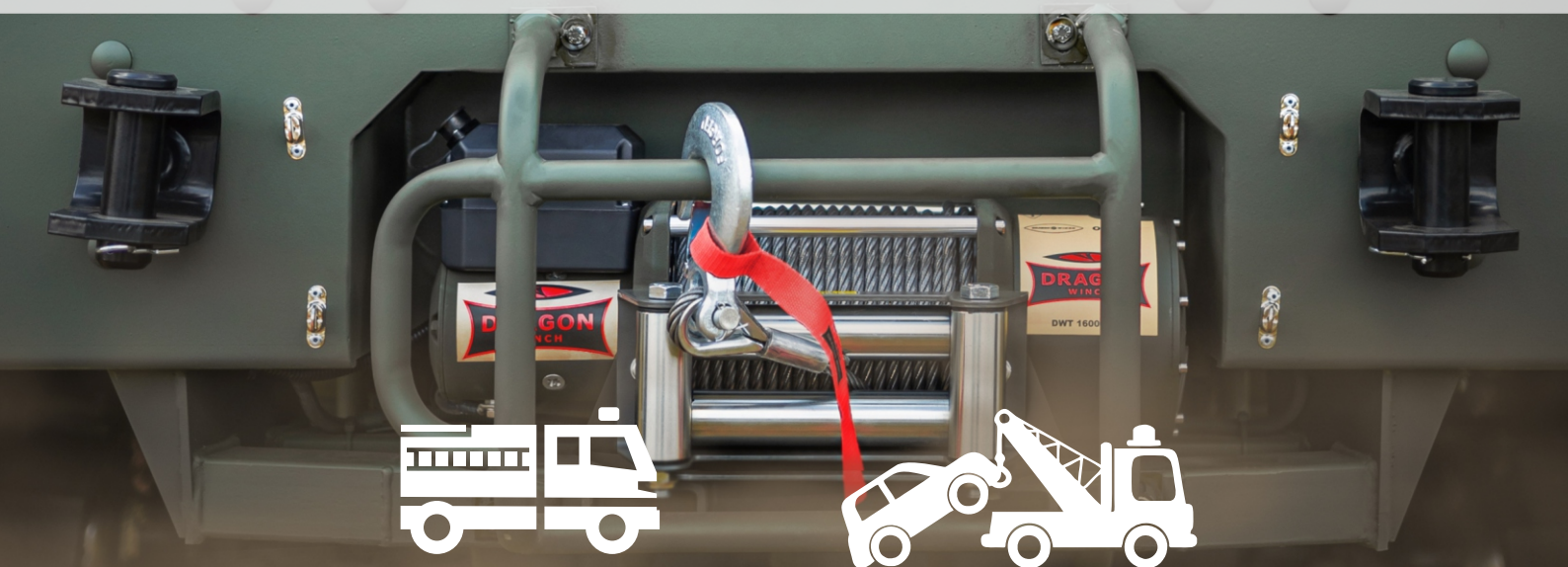
**AVAILABLE IN
46 COUNTRIES**





DRAGON WINCH TRUCK

THE DRAGON WINCH TRUCK SERIES COMPRISES EXTRA STRONG
AND SOLID WINCHES INTENDED FOR USE IN THE MOST EXTREME CONDITIONS.
DEDICATED FOR:



special
vehicles



industrial
vehicles

DRAGON WINCH series TRUCK



DWT 30000 HD



DWT 22000 HD

Dedicated for: special trucks,
tow trucks / industrial vehicles

Voltage: 24 V

Motor: 10,5 hp

Pulling rate: 30000 lb / 13605 kg

Reduction ratio: 463:1

Gear train: 3 stage planetary

Brake: dynamic

Length of the steel cable: 30 m

Overall product dimensions (LxWxH):

745 mm x 217 mm x 271 mm

Weight: 94 kg

Mounting screws (pcs): 12

Mounting bolt pattern: 365 mm x 114 mm
/ 365 mm x 164 mm

Dedicated for: special trucks,
tow trucks / industrial vehicles

Voltage: 24 V

Motor: 9,5 hp

Pulling rate: 22000 lb / 9979 kg

Reduction ratio: 463:1

Gear train: 3 stage planetary

Brake: dynamic

Length of the steel cable: 30 m

Length of the synthetic rope: 21 m

Overall product dimensions (LxWxH):

637 mm x 217 mm x 271 mm

Weight: 80 kg

Mounting screws (pcs): 8

Mounting bolt pattern: 254 mm x 114 mm
/ 254 mm x 164 mm

THE SET INCLUDES:

- steel cable
- hook
- control box
- remote control
- and wireless remote control
- mounting screws
- rope tensioner

THE SET INCLUDES:

- steel cable or synthetic rope
- hook
- control box
- roller guides or aluminum fairlead
- remote control
- and wireless remote control
- mounting screws

Cable winding speed and power consumption (the first cable layer on the drum)

cable load	kg	0	3400	6800	13605
cable speed	m/min	2,62	2,22	1,8	1,0
power consumption 24 V	amp	45	152	313	414

Cable winding speed and power consumption (the first cable layer on the drum)

cable load	kg	2721	5443	9979	
cable speed	m/min	4,5	3,7	3,0	1,7
power consumption 24 V	amp	42	112	232	305

Pulling force depending on cable layer

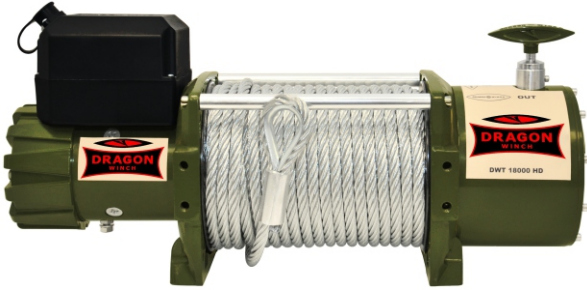
cable layer		1	2	3
cable pull	kg	13605	10830	9550
cable lenght on the drum	m	8,6	18,8	30

Pulling force depending on cable layer

cable layer		1	2	3	4	5
cable pull	kg	9979	7883	6786	5887	4889
cable lenght on the drum	m	5,1	11,1	18,4	26,5	30,0



DRAGON WINCH series TRUCK



DWT 18000 HD

Dedicated for: off-road vehicles,
tow trucks / industrial vehicles
Voltage: 24 V
Motor: 9,0 hp
Pulling rate: 18000 lb / 8165 kg
Gear train: 3 stage planetary
Reduction ratio: 358:1
Brake: dynamic
Length of the steel cable: 30 m
Length of the synthetic rope: 21 m
Overall product dimensions (LxWxH):
586 mm x 196 mm x 265 mm
Weight: 63 kg
Mounting screws (pcs): 4
Mounting bolt pattern: 254 mm x 114 mm

THE SET INCLUDES:

- steel cable or synthetic rope
- hook
- control box
- roller guides
- or aluminum fairlead
- remote control
- and wireless remote control
- mounting screws

Cable winding speed and power consumption (the first cable layer on the drum)

cable load	kg	2721	5443	8165	
cable speed	m/min	5,5	4,1	3,1	1,5
power consumption 24 V	amp	39	105	214	280

Pulling force depending on cable layer

cable layer		1	2	3	4	5
cable pull	kg	8165	6450	5552	4817	4001
cable length on the drum	m	5,2	11,4	19,0	27,8	30,0



DWT 16000 HD

Dedicated for: off-road vehicles,
tow trucks / industrial vehicles
Voltage: 12 V or 24 V
Motor: 7,8 hp
Pulling rate: 16000 lb / 7257 kg
Gear train: 3 stage planetary
Reduction ratio: 358:1
Brake: dynamic
Length of the steel cable: 30 m
Length of the synthetic rope: 21 m
Overall product dimensions (LxWxH):
574 mm x 196 mm x 266 mm
Weight: 62 kg
Mounting screws (pcs): 4
Mounting bolt pattern: 254 mm x 114 mm

THE SET INCLUDES:

- steel cable or synthetic rope
- hook
- control box
- roller guides
- or aluminum fairlead
- remote control
- and wireless remote control
- mounting screws

Cable winding speed and power consumption (the first cable layer on the drum)

cable load	kg	2902	5806	7257	
cable speed	m/min	5,3	3,9	2,7	1,6
power consumption 12 V	amp	64	114	231	440
power consumption 24 V	amp	39	108	211	260

Pulling force depending on cable layer

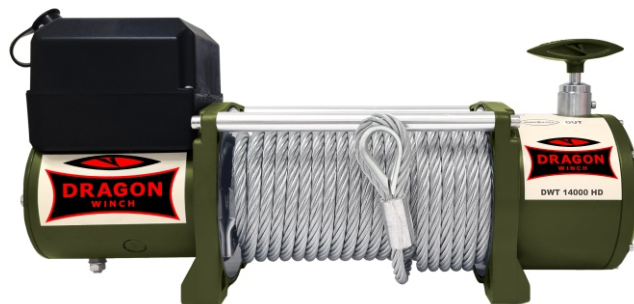
cable layer		1	2	3	4	5
cable pull	kg	7257	6020	5182	4496	3734
cable length on the drum	m	5,3	11,5	19,3	27,9	30,0

DRAGON WINCH series TRUCK



DWT 16000 HDL

Dedicated for: special trucks
Voltage: 12 V lub 24 V
Motor: 7,8 hp
Pulling rate: 16000 lb / 7257 kg
Gear train: 3 stage planetary
Reduction ratio: 358:1
Brake: dynamic
Length of the steel cable: 60 m
Overall product dimensions (LxWxH):
 792 mm x 196 mm x 266 mm
Weight: 75 kg
Mounting screws (pcs): 4
Mounting bolt pattern: 480 mm x 114 mm



DWT 14000 HD

Dedicated for: special trucks,
 tow trucks / industrial vehicles
Voltage: 12 V lub 24 V
Motor: 7,8 hp
Pulling rate: 14000 lb / 6350 kg
Gear train: 3 stage planetary
Reduction ratio: 265:1
Brake: dynamic
Length of the steel cable: 20 m
Overall product dimensions (LxWxH):
 537 mm x 159 mm x 246 mm
Weight: 40 kg
Mounting screws (pcs): 4
Mounting bolt pattern: 254 mm x 114 mm

THE SET INCLUDES:

- hook
- control box
- remote control
- and wireless remote control
- mounting screws
- rope tensioner

THE SET INCLUDES:

- steel cable
- hook
- control box
- roller guides
- remote control
- and wireless remote control
- mounting screws

Cable winding speed and power consumption (the first cable layer on the drum)

cable load	kg	2902	5806	7257	
cable speed	m/min	5,3	3,9	2,7	1,3
power consumption 12 V	amp	64	114	231	440
power consumption 24 V	amp	39	108	219	250

Cable winding speed and power consumption (the first cable layer on the drum)

cable load	kg	2721	5443	6350	
cable speed	m/min	6	4,5	2,9	1,1
power consumption 12 V	amp	61	206	359	418
power consumption 24 V	amp	38	103	207	240

Pulling force depending on cable layer

cable layer		1	2	3	4
cable pull	kg	7257	6020	5182	4496
cable lenght on the drum	m	12,7	28,1	46,4	60,0

Pulling force depending on cable layer

cable layer		1	2	3	4
cable pull	kg	6350	5016	4318	3746
cable lenght on the drum	m	4,8	10,8	17,5	20,0



DRAGON WINCH HIDRA

THE DRAGON WINCH HIDRA SERIES. HYDRAULIC WINCHES.
A VERY LONG PRODUCT LIFESPAN AND A HIGH RESISTANCE
TO EXTREMELY HARD WORKING CONDITIONS.
DEDICATED FOR



special
vehicles



industrial
vehicles

DRAGON WINCH HIDRA



DWHI 20000 HD

Dedicated for: special trucks, tow trucks / industrial vehicles

Power: hydraulic

Pulling rate: 20000 lb / 9072 kg

Pulling force depending on steel cable layer:

- first layer of steel cable: 9072 kg
- last layer of steel cable: 6187 kg

Steel cable winding speed:

- first layer of steel cable: 4,2 m / min
- last layer of steel cable: 5,6 m / min

Max oil pressure: 17,5 Mpa

Max oil flow: 60 l / min

Overall product dimensions (LxWxH):

590 mm x 269 mm x 217 mm

Drum capacity: 30 m

Number of steel cable layers: 4

Weight: 55 kg



DWHI 16000 HD

Dedicated for: special trucks, tow trucks / industrial vehicles

Power: hydraulic

Pulling rate: 16000 lb / 7257 kg

Pulling force depending on steel cable layer:

- first layer of steel cable: 7257 kg
- last layer of steel cable: 4944 kg

Steel cable winding speed:

- first layer of steel cable: 4,2 m / min
- last layer of steel cable: 5,6 m / min

Max oil pressure: 17,5 Mpa

Max oil flow: 60 l / min

Overall product dimensions (LxWxH):

590 mm x 269 mm x 217 mm

Drum capacity: 30 m

Number of steel cable layers: 4

Weight: 55 kg

THE SET INCLUDES:

- hook
- roller guides
- mounting screws
- steel cable (for self-winding)

THE SET INCLUDES:

- hook
- roller guides
- mounting screws
- steel cable (for self-winding)

DRAGON WINCH HIDRA



DWHI 12000 HD

Dedicated for: special trucks, tow trucks / industrial vehicles

Power: hydraulic

Pulling rate: 12000 lb / 5443 kg

Pulling force depending on steel cable layer:

- first layer of steel cable: 5443 kg

- last layer of steel cable: 2851 kg

Steel cable winding speed:

- first layer of steel cable: 4,2 m / min

- last layer of steel cable: 6,8 m / min

Max oil pressure: 16 Mpa

Max oil flow: 40 l / min

Overall product dimensions (LxWxH):

590 mm x 269 mm x 217 mm

Drum capacity: max 45 m

Number of steel cable layers: max 5

Weight: 55 kg

THE SET INCLUDES:

- hook
- roller guides
- mounting screws
- steel cable (for self-winding)

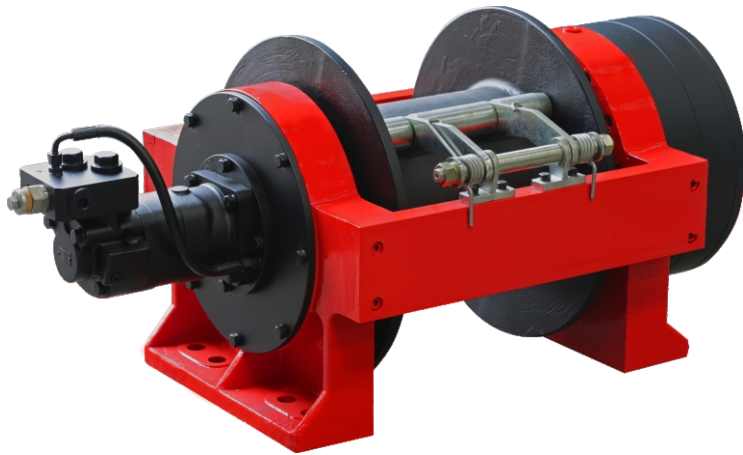




DRAGON WINCH

series HIDRA

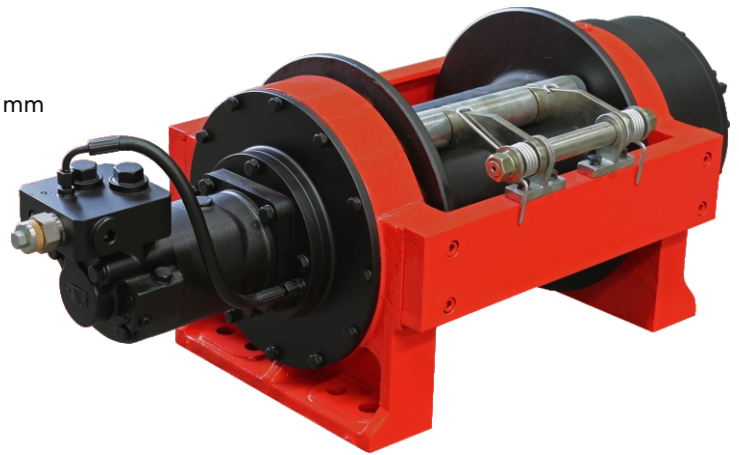
DWHI 660 HD



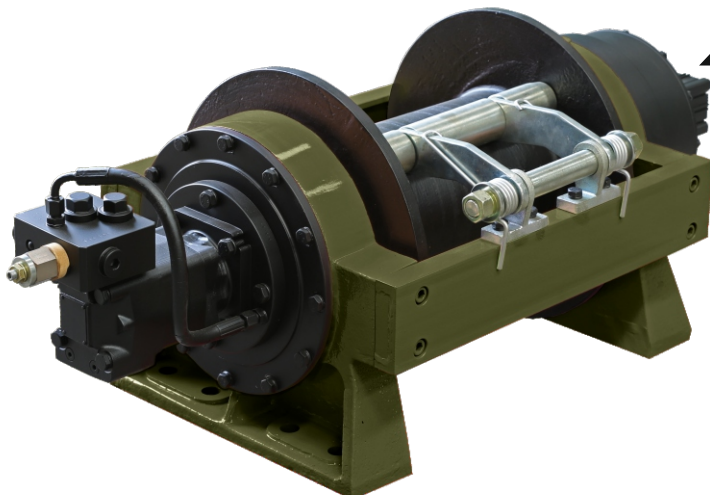
Dedicated for: special trucks,
tow trucks / industrial vehicles
Power supply: hydraulic
Pulling rate: 66 000 lb / 30 000 kg
Speed of the steel cable: 5,5 m/min
Pressure of oil: 17 / 170 MPa/Bar
Oil flow: 120 l/min
Overall product dimensions (LxWxH): 1 337 mm x 618 mm x 530 mm
Size of the drum (LxWxH): 530 mm x 280 mm x 360 mm
Capacity of the drum: 54 m (max recommended length
of the steel cable on the drum)
Diameter of the steel cable (recommended): 32 mm
Weight: 570 kg

DWHI 450 HD

Dedicated for: special trucks, tow trucks / industrial vehicles
Power supply: hydraulic
Pulling rate: 45 000 lb / 20 000 kg
Speed of the steel cable: 6 m/min
Pressure of oil: 17/170 MPa/Bar
Oil flow: 120 l/min
Overall product dimensions (LxWxH): 1 250 mm x 400 mm x 390 mm
Size of the drum (LxWxH): 400 mm x 210 mm x 340 mm
Capacity of the drum: 45 m (max recommended length
of the steel cable on the drum)
Diameter of the steel cable (recommended): 26 mm
Weight: 295 kg



DWHI 300 HD



Dedicated for: special trucks,
tow trucks / industrial vehicles
Power supply: hydraulic
Pulling rate: 30 000 lb / 13 605 kg
Speed of the steel cable: 7 m/min
Pressure of oil: 17/170 MPa/Bar
Oil flow: 60 l/min
Overall product dimensions (LxWxH): 1 120 mm x 470 mm x 410 mm
Size of the drum (LxWxH): 390 mm x 190 mm x 340 mm
Capacity of the drum: 59 m (max recommended length
of the steel cable on the drum)
Diameter of the steel cable (recommended): 18 mm
Weight: 265 kg

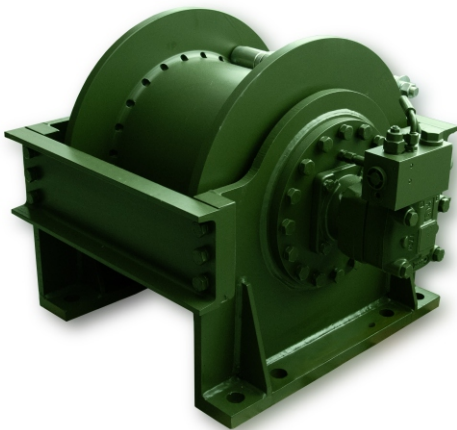


DRAGON WINCH

series HIDRA

DWHI 240 HD EN

Dedicated for: special trucks, tow trucks / industrial vehicles
Power supply: hydraulic
Pulling rate: 24 000 lb/ 10 886 kg / 10 000 kg EN
Speed of the steel cable: 5 m/min
Pressure of oil: 16/160 MPa/Bar
Oil flow: 15-60 l/min
Overall product dimensions (LxWxH): 660 mm x 384 mm x 349 mm
Capacity of the drum: 40 m
Diameter of the steel cable (recommended): 16 mm
Weight: 199 kg

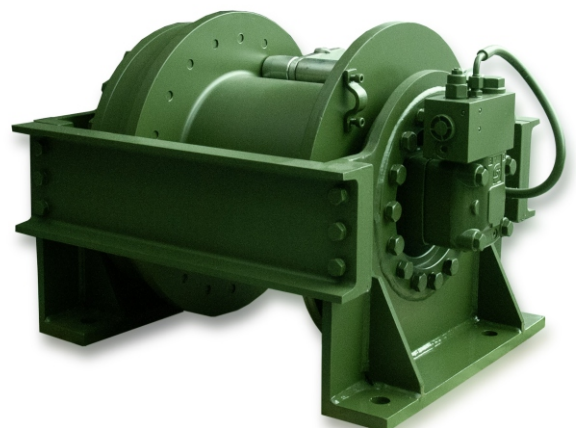


DWHI 550 HD SPECIAL

Dedicated for: special trucks, tow trucks / industrial vehicles
Power supply: hydraulic
Pulling rate: 55 000 lb/ 24 948 kg
Speed of the steel cable: 4,7 m/min
Pressure of oil: 18 / 180 MPa/Bar
Oil flow: 80 l/min
Overall product dimensions (LxWxH): 764 mm x 660 mm x 570 mm
Capacity of the drum: 47 m (max recommended length of the steel cable on the drum)
Diameter of the steel cable (recommended): 25 mm
Weight: 535 kg

DWHI 450 HD SPECIAL

Dedicated for: special trucks, tow trucks / industrial vehicles
Power supply: hydraulic
Pulling rate: 45 000 lb/ 20 412 kg
Speed of the steel cable: 7,5 m/min
Pressure of oil: 18/180 MPa/Bar
Oil flow: 80 l/min
Overall product dimensions (LxWxH): 1 250 mm x 400 mm x 390 mm
Capacity of the drum: 52 m (max recommended length of the steel cable on the drum)
Diameter of the steel cable (recommended): 22 mm
Weight: 405 kg





DRAGON
WINCH

DRAGON WINCH MAVERICK

THE DRAGON WINCH MAVERICK SERIES COMPRISES PROVEN
AND TOUGH WINCHES INTENDED FOR MANY DIFFERENT KINDS OF USE.
DEDICATED FOR



special
vehicles



medium and small
off-road vehicles



car
transporters



ATV



ploughs

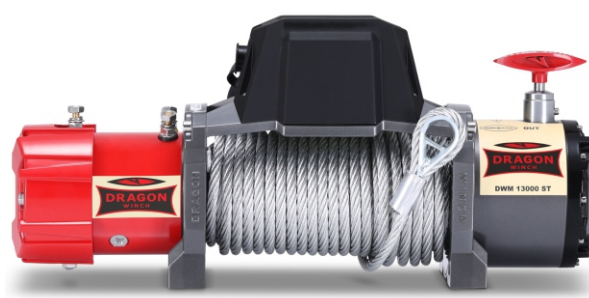


DRAGON WINCH series MAVERICK



DWM 13000 HD

Dedicated for: off-road vehicles,
tow trucks/ industrial vehicles
Voltage: 12 V or 24 V
Motor: 6,8 hp
Pulling rate: 13000 lb / 5897 kg
Gear train: 3 stage planetary
Reduction ratio: 265:1
Brake: dynamic
Length of the steel cable: 20/30 m
Length of the synthetic rope: 20/30 m
Overall product dimensions (LxWxH):
537 mm x 166 mm x 228 mm
Weight: 39 kg
Mounting screws (pcs): 4
Mounting bolt pattern: 254 mm x 114 mm



DWM 13000 ST

Dedicated for: off-road vehicles,
tow trucks/ industrial vehicles
Voltage: 12 V or 24 V
Motor: 6,8 hp
Pulling rate: 13000 lb / 5897 kg
Gear train: 3 stage planetary
Reduction ratio: 265:1
Brake: dynamic
Length of the steel cable: 20/30 m
Length of the synthetic rope: 20/30 m
Overall product dimensions (LxWxH):
546 mm x 166 mm x 244mm
Weight: 39 kg
Mounting screws (pcs): 4
Mounting bolt pattern: 254 mm x 114 mm

THE SET INCLUDES:

- steel cable or synthetic rope
- hook
- control box
- roller guides
- or aluminum fairlead
- remote control
- and wireless remote control
- mounting screws

THE SET INCLUDES:

- steel cable or synthetic rope
- hook
- control box
- roller guides
- or aluminum fairlead
- remote control
- and wireless remote control
- mounting screws

Cable winding speed and power consumption (the first cable layer on the drum)

cable load	kg	1814	3629	5897	
cable speed	m/min	5,9	4,4	2,8	0,8
power consumption 12 V	amp	58	158	314	448
power consumption 24 V	amp	35	89	178	245

Cable winding speed and power consumption (the first cable layer on the drum)

cable load	kg	1814	3629	5897	
cable speed	m/min	5,9	4,4	2,8	0,8
power consumption 12 V	amp	58	158	314	448
power consumption 24 V	amp	35	89	178	245

Pulling force depending on cable layer

cable layer		1	2	3	4	5
cable pull	kg	5897	4658	4009	3463	2889
cable lenght on the drum	m	4,9	11,0	17,8	26,0	30,0

Pulling force depending on cable layer

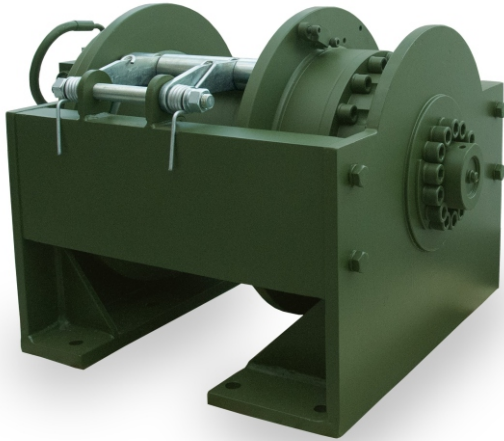
cable layer		1	2	3	4	5
cable pull	kg	5897	4658	4009	3463	2889
cable lenght on the drum	m	4,9	11,0	17,8	26,0	30,0



DRAGON WINCH series HIDRA

WINCHES DEDICATED INDIVIDUAL PRODUCTION

DWHI 220 HD A



Dedicated for: special trucks,
tow trucks / industrial vehicles

Power supply: hydraulic

Pulling rate: 22 000 lb / 9979 kg

Speed of the steel cable: 7 m/min

Pressure of oil: 16/160 MPa/Bar

Oil flow: 70 l/min

Overall product dimensions (LxWxH): 640 mm x 500 mm x 430 mm

Capacity of the drum: 60 m

Diameter of the steel cable (recommended): 16 mm

Weight: 264 kg

DWHI 220 HD B

Dedicated for: special trucks,
tow trucks / industrial vehicles

Power supply: hydraulic

Pulling rate: 22 000 lb / 9979 kg

Speed of the steel cable: 7 m/min

Pressure of oil: 18/180 MPa/Bar

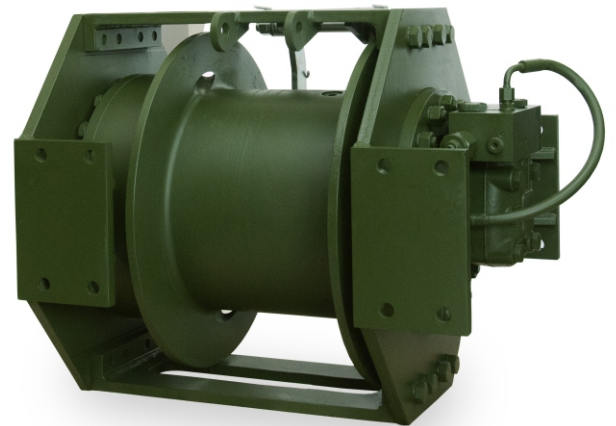
Oil flow: 72 l/min

Overall product dimensions (LxWxH): 660 mm x 470 mm x 505 mm

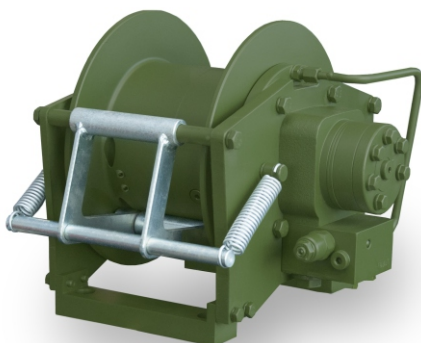
Capacity of the drum: 60 m

Diameter of the steel cable (recommended): 18 mm

Weight: 324 kg



VERTICAL PULL HYDRAULIC WINCH



DWHI 33 HD

Dedicated for: big tow trucks, mobile crane

Power supply: hydraulic

Pulling rate: 3 310 lb / 1 500 kg

Speed of the steel rope: 38 m/min

Pressure of oil: 16/160 MPa/Bar

Oil flow: 55 l/min

Overall product dimensions (LxWxH): 324 mm x 267 mm x 295 mm

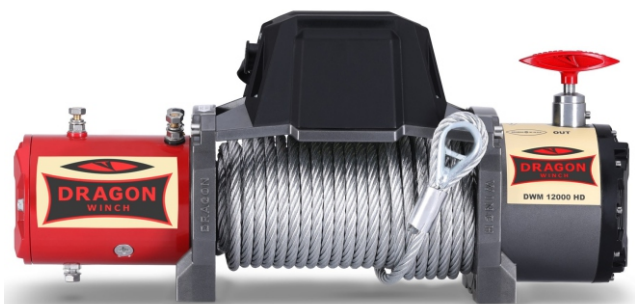
Capacity of the drum: 31 m

Diameter of the steel cable (recommended): 8 mm

Weight: 48 kg

DRAGON WINCH

series MAVERICK



DWM 12000 HD

Dedicated for: off-road vehicles, tow trucks/ industrial vehicles
Voltage: 12 V
Motor: 6,8 hp
Pulling rate: 12000 lb / 5443 kg
Gear train: 3 stage planetary
Reduction ratio: 265:1
Brake: dynamic
Length of the steel cable: 20/30 m
Length of the synthetic rope: 20/30 m
Overall product dimensions (LxWxH): 537 mm x 166 mm x 244 mm
Weight: 41 kg
Mounting screws (pcs): 4
Mounting bolt pattern: 254 mm x 114 mm

THE SET INCLUDES:

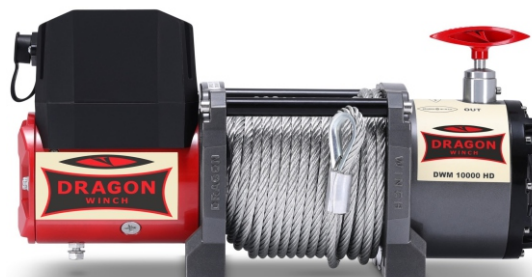
- steel cable or synthetic rope
- hook
- control box
- roller guides or aluminum fairlead
- remote control and wireless remote control
- mounting screws

Cable winding speed and power consumption (the first cable layer on the drum)

cable load	kg	1814	3629	5443	
cable speed	m/min	5,9	4,4	2,8	0,9
power consumption 12 V	amp	58	158	314	415
power consumption 24 V	amp	35	89	178	225

Pulling force depending on cable layer

cable layer		1	2	3	4	5
cable pull	kg	5443	4299	3701	3211	2667
cable lenght on the drum	m	5,3	11,5	18,6	27,3	30,0



DWM 10000 HD

Dedicated for: off-road vehicles, tow trucks/ industrial vehicles
Voltage: 12 V
Motor: 6,8 hp
Pulling rate: 10000 lb / 4536 kg
Gear train: 3 stage planetary
Reduction ratio: 265:1
Brake: dynamic
Length of the steel cable: 24 m
Length of the synthetic rope: 25 m
Overall product dimensions (LxWxH): 450 mm x 159 mm x 243mm
Weight: 35 kg
Mounting screws (pcs): 4
Mounting bolt pattern: 164 mm x 114 mm

THE SET INCLUDES:

- steel cable or synthetic rope
- hook
- control box
- roller guides or aluminum fairlead
- remote control and wireless remote control
- mounting screw

Cable winding speed and power consumption (the first cable layer on the drum)

cable load	kg	1814	4536	
cable speed	m/min	5,9	3,6	1,3
power consumption 12 V	amp	50	180	390

Pulling force depending on cable layer

cable layer		1	2	3	4	5
cable pull	kg	4536	3583	3084	2676	2270
cable lenght on the drum	m	3,6	7,8	12,4	17,8	24,0

DRAGON WINCH

series MAVERICK



DWM 4000 ST

Dedicated for: ATV / UTV, ploughs
Voltage: 12 V
Motor: 1,6 hp
Pulling rate: 4000 lb / 1814 kg
Gear train: single
Reduction ratio: 153:1
Brake: self-braking
Length of the steel cable: 15 m.
Length of the synthetic rope: 11 m
Overall product dimensions (LxWxH):
 320 mm x 100 mm x 100 mm
Weight: 10 kg
Mounting screws (pcs): 4
Mounting bolt pattern: 130 mm x 80 mm

THE SET INCLUDES:

- steel cable or synthetic rope
- hook
- control box
- roller guides
- or aluminum fairlead
- universal mounting plate
- switch on the steering wheel and wireless remote control
- mounting screws



DWM 3000 ST

Dedicated for: ATV / UTV, ploughs
Voltage: 12 V
Motor: 1,4 hp
Pulling rate: 3000 lb / 1360 kg
Gear train: single
Reduction ratio: 153:1
Brake: self-braking
Length of the steel cable: 10 m
Length of the synthetic rope: 10 m
Overall product dimensions (LxWxH):
 280 mm x 100 mm x 101 mm
Weight: 9 kg
Mounting screws (pcs): 2
Mounting bolt pattern: 79 mm

THE SET INCLUDES:

- steel cable or synthetic rope
- hook
- control box
- roller guides
- or aluminum fairlead
- universal mounting plate
- switch on the steering wheel and wireless remote control
- mounting screws

Cable winding speed and power consumption (the first cable layer on the drum)

cable load	kg	453	907	1814	
cable speed	m/min	3,9	2,7	1,8	0,6
power consumption 12 V	amp	17	39	78	138

Cable winding speed and power consumption (the first cable layer on the drum)

cable load	kg	453	1360	
cable speed	m/min	3,5	2,4	0,8
power consumption 12 V	amp	11	53	133

Pulling force depending on cable layer

cable layer	1	2	3	4	5	6	
cable pull	kg	1814	1434	1233	1071	889	707
cable length on the drum	m	1,6	3,5	5,7	8,4	11,3	15,0

Pulling force depending on cable layer

cable layer	1	2	3	4	5	
cable pull	kg	1360	1074	924	802	667
cable length on the drum	m	1,5	3,4	5,5	8,2	10,0



DRAGON WINCH series MAVERICK

DWM 2000 ST

Dedicated for: ATV / UTV, ploughs

Voltage: 12 V

Motor: 1,4 hp

Pulling rate: 2000 lb / 907 kg

Gear train: single

Reduction ratio: 153:1

Brake: self-braking

Length of the steel cable: 10 m.

Length of the synthetic rope: 10 m

Overall product dimensions (LxWxH):

280 mm x 100 mm x 100 mm

Weight: 6 kg

Mounting screws (pcs): 2

Mounting bolt pattern: 79 mm



THE SET INCLUDES:

- steel cable or synthetic rope
- hook
- control box
- aluminum fairlead for synthetic rope
- switch on the steering wheel
- mounting screws

Cable winding speed and power consumption (the first cable layer on the drum)

cable load	kg	453	907	
cable speed	m/min	3,5	2,4	1,0
power consumption 12 V	amp	11	53	95

Pulling force depending on cable layer

cable layer		1	2	3	4	5
cable pull	kg	907	716	617	535	444
cable lenght on the drum	m	1,8	3,8	6,2	8,9	10,0





DRAGON WINCH series HIGHLANDER



DWH 15000 HD

Dedicated for: off-road vehicles
Voltage: 12 V
Motor: 9 hp
Pulling rate: 15000 lb / 6803 kg
Gear train: 3 stage planetary
Reduction ratio: 274:1
Brake: dynamic
Length of the steel cable: 28 m
Length of the synthetic rope: 21 m
Overall product dimensions (LxWxH):
 578 mm x 175 mm x 260 mm
Weight: 53 kg
Mounting screws (pcs): 4
Mounting bolt pattern: 254 mm x 114 mm

THE SET INCLUDES:

- steel cable or synthetic rope
- hook
- control box
- roller guides
- or aluminum fairlead
- remote control
- and wireless remote control
- mounting screws

Cable winding speed and power consumption (the first cable layer on the drum)

cable load	kg	1814	3629	6803	
cable speed	m/min	6,5	5,2	3,8	1,5
power consumption 12 V	amp	65	177	353	483

Pulling force depending on cable layer

cable layer		1	2	3	4	5
cable pull	kg	6803	5372	4626	4014	3333
cable length on the drum	m	5,2	11,0	18,3	26,6	28,0



DWH 12000 HD

Dedicated for: off-road vehicles
Voltage: 12 V
Motor: 9 hp
Pulling rate: 12000 lb / 5443 kg
Gear train: 3 stage planetary
Reduction ratio: 274:1
Brake: dynamic
Length of the steel cable: 28 m
Length of the synthetic rope: 30 m.
Overall product dimensions (LxWxH):
 578 mm x 175 mm x 260 mm
Weight: 48 kg
Mounting screws (pcs): 4
Mounting bolt pattern: 254 mm x 114 mm

THE SET INCLUDES:

- steel cable or synthetic rope
- hook
- control box
- roller guides
- or aluminum fairlead
- remote control
- and wireless remote control
- mounting screws

Cable winding speed and power consumption (the first cable layer on the drum)

cable load	kg	1814	3629	5443	
cable speed	m/min	6,5	5,2	3,8	2,0
power consumption 12 V	amp	65	177	353	470

Pulling force depending on cable layer

cable layer		1	2	3	4
cable pull	kg	5443	4299	3701	3211
cable length on the drum	m	5,8	12,7	20,0	28,0



DRAGON WINCH HIGHLANDER

THE DRAGON WINCH HIGHLANDER SERIES HAS BEEN CREATED FOR OFF-ROAD VEHICLES. WITH A STRONGER MOTOR, HEAVY DUTY GEARBOX, DYNAMIC BRAKE AND REINFORCED CONSTRUCTION, IT IS THE BEST OPTION IN EXTREME OPERATING CONDITIONS. DEDICATED FOR:



off-road
vehicles



extreme
ATV



UTV

DRAGON WINCH series HIGHLANDER



superfast



DWH 9000 HD

Dedicated for: off-road vehicles
Voltage: 12 V
Motor: 9 hp
Pulling rate: 9000 lb / 4082 kg
Gear train: 3 stage planetary
Reduction ratio: 140:1
Brake: dynamic
Length of the steel cable: 28 m
Length of the synthetic rope: 30 m.
Overall product dimensions (LxWxH):
 578 mm x 175 mm x 260 mm
Weight: 46 kg
Mounting screws (pcs): 4
Mounting bolt pattern: 254 mm x 114 mm

THE SET INCLUDES:

- steel cable or synthetic rope
- hook
- control box
- roller guides
- or aluminum fairlead
- remote control
- and wireless remote control
- mounting screws



DWH 6000 HD S

Dedicated for: ATV/UTV
Voltage: 12 V
Motor: 1,9 hp
Pulling rate: 6000 lb / 2721 kg
Gear train: 3 stage planetary
Reduction ratio: 166:1
Brake: automatic
Length of the synthetic rope: 15 m
Overall product dimensions (LxWxH):
 386 mm x 114 mm x 115 mm
Weight: 12 kg
Mounting screws (pcs): 4
Mounting bolt pattern: 168 mm x 76 mm

THE SET INCLUDES:

- synthetic rope
- hook
- control box
- fairlead
- switch on the steering wheel
- and wireless remote control
- mounting screws
- mounting plate

Cable winding speed and power consumption (the first cable layer on the drum)

cable load	kg	1814	3629	4082	
cable speed	m/min	10,9	8,8	6,2	5,4
power consumption 12 V	amp	70	211	422	480

Cable winding speed and power consumption (the first cable layer on the drum)

cable load	kg	453	907	2721	
cable speed	m/min	5,8	4,3	3,8	1,9
power consumption 12 V	amp	25	32	64	170

Pulling force depending on cable layer

cable layer		1	2	3	4
cable pull	kg	4082	3225	2776	2408
cable length on the drum	m	6,2	13,8	22,0	28,0

Pulling force depending on cable layer

cable layer		1	2	3	4
cable pull	kg	2721	2150	1849	1609
cable length on the drum	m	3,25	7,28	12,08	15



DRAGON WINCH series HIGHLANDER



DWH 4500 HD S

Dedicated for: ATV/UTV
Voltage: 12 V
Motor: 1,9 hp
Pulling rate: 4500 lb / 2041 kg
Gear train: 3 stage planetary
Reduction ratio: 138:1
Brake: automatic
Length of the steel cable: 20 m
Overall product dimensions (LxWxH):
 389 mm x 114 mm x 115 mm
Weight: 14 kg
Mounting screws (pcs): 4
Mounting bolt pattern: 168 mm x 76 mm

THE SET INCLUDES:

- steel cable or synthetic rope
- hook
- control box
- roller guides
- switch on the steering wheel and wireless remote control
- mounting screws

Cable winding speed and power consumption (the first cable layer on the drum)

cable load	kg	453	907	2041	
cable speed	m/min	6,3	5,3	4,5	2,1
power consumption 12 V	amp	23	40	81	160

Pulling force depending on cable layer

cable layer		1	2	3	4	5
cable pull	kg	2041	1612	1388	1204	1001
cable lenght on the drum	m	3,7	8,1	12,9	18,3	20,0



DWH 4500 HD

Dedicated for: ATV/UTV
Voltage: 12 V
Motor: 1,9 hp
Pulling rate: 4500 lb / 2041 kg
Gear train: 3 stage planetary
Reduction ratio: 138:1
Brake: automatic
Length of the steel cable: 15 m
Length of the synthetic rope: 15 m
Overall product dimensions (LxWxH):
 337 mm x 114 mm x 115 mm
Weight: 13 kg
Mounting screws (pcs): 4
Mounting bolt pattern: 124 mm x 76 mm

THE SET INCLUDES:

- steel cable or synthetic rope
- hook
- control box
- roller guides
- or aluminum fairlead
- remote control
- and wireless remote control
- mounting screws
- universal mounting plate

Cable winding speed and power consumption (the first cable layer on the drum)

cable load	kg	453	907	2041	
cable speed	m/min	6,3	5,3	4,5	2,1
cable consumption 12 V	amp	23	40	81	160

Pulling force depending on cable layer

cable layer		1	2	3	4	5
cable pull	kg	2041	1612	1388	1204	1001
cable lenght on the drum	m	2,3	4,9	8,0	11,4	15,0

DRAGON WINCH series HIGHLANDER



DWH 3500 HD

Dedicated for: ATV/UTV
Voltage: 12 V
Motor: 1,6 hp
Pulling rate: 3500 lb / 1588 kg
Gear train: 3 stage planetary
Reduction ratio: 138:1
Brake: automatic
Length of the steel cable: 15 m
Length of the synthetic rope: 15 m
Overall product dimensions (LxWxH):
 347 mm x 114 mm x 115 mm
Weight: 12 kg
Mounting screws (pcs): 4
Mounting bolt pattern: 124 mm x 76 mm

THE SET INCLUDES:

- steel cable or synthetic rope
- hook
- control box
- roller guides
- or aluminum fairlead
- universal mounting plate
- switch on the steering wheel and wireless remote control
- mounting screws

Cable winding speed and power consumption (the first cable layer on the drum)

cable load	kg	453	907	1587	
cable speed	m/min	5,4	4,8	4,0	3,0
power consumption 12 V	amp	19	49	96	150

Pulling force depending on cable layer

cable layer		1	2	3	4	5
cable pull	kg	1587	1254	1079	967	778
cable length on the drum	m	2,5	5,3	8,4	12,2	15,0



DWH 3000 HD

Dedicated for: ATV/UTV
Voltage: 12 V
Motor: 1,4 hp
Pulling rate: 3000 lb / 1360 kg
Gear train: 3 stage planetary
Reduction ratio: 138:1
Brake: automatic
Length of the steel cable: 15 m
Length of the synthetic rope: 15 m
Overall product dimensions (LxWxH):
 347 mm x 114 mm x 115 mm
Weight: 12 kg
Mounting screws (pcs): 4
Mounting bolt pattern: 124 mm x 76 mm

THE SET INCLUDES:

- steel cable or synthetic rope
- hook
- control box
- roller guides
- or aluminum fairlead
- universal mounting plate
- switch on the steering wheel and wireless remote control
- mounting screws

Cable winding speed and power consumption (the first cable layer on the drum)

cable load	kg	453	907	1360	
cable speed	m/min	4,9	4,3	3,5	2,8
power consumption 12 V	amp	18,7	50	101	135

Pulling force depending on cable layer

cable layer		1	2	3	4	5
cable pull	kg	1360	1074	925	802	666
cable length on the drum	m	2,6	5,4	8,6	12,4	15,0



DRAGON
WINCH

PAŃSTWOWA STRAŻ
POŻARNA
JRG - ŁABĘDY

DRAGON WINCH EN

Winches compliant with EN 14492-2 Standard
intended for:



special vehicles



tow trucks, industrial vehicles

DRAGON WINCH EN



DWT 18500 HD EN

Dedicated for: special trucks, tow trucks / industrial vehicles
Voltage: 24 V
Motor: 9,5 hp
Pulling rate: 18500 lb / 8389 kg
Reduction ratio: 463:1
Gear train: 3 stage planetary
Brake: dynamic
Length of the steel cable: 30 m (max 36)
Overall product dimensions (LxWxH): 745 mm x 217 mm x 271 mm
Weight: 91 kg
Mounting screws (pcs): 8
Mounting bolt pattern: 365 mm x 114 mm / 365 mm x 164 mm

THE SET INCLUDES:

- steel cable
 - hook
 - control box
 - cable tensioner
 - roller guides
 - remote control
- and wireless remote control
- mounting screws
 - safety switch 300A

Cable winding speed and power consumption (the first cable layer on the drum)

cable load	kg	2721	5443	8165
cablespeed	m/min	5,0	4,0	3,3 1,9
power consumption 24 V	amp	50	124	248 320

Pulling force depending on cable layer

cable layer		1	2	3
cable pull	kg	8165	6450	5552
cable lenght on the drum	m	11	23,5	30



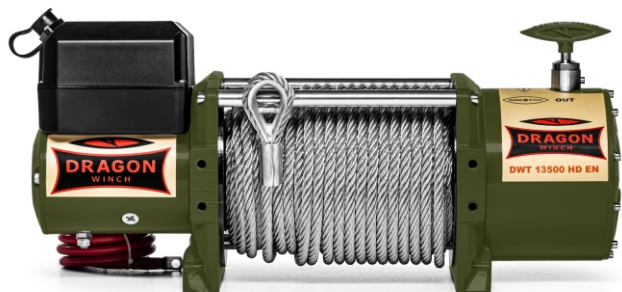
DWHI 18500 HD EN

Dedicated for: special trucks, tow trucks / industrial vehicles
Power: hydraulic
Pulling rate: 18500 lb / 8389 kg
Pulling force depending on steel cable layer:
 - first layer of cable: 8389 kg
 - last layer of cable: 5552 kg
Steel cable winding speed:
 - first layer of steel cable: 4,4 m / min
 - last layer of steel cable: 6,1 m / min
Max oil pressure: 17,5 Mpa
Max oil flow: 60 l / min
Overall product dimensions (LxWxH): 700 mm x 271 mm x 220 mm
Drum capacity: 31 m
Number of steel cable layers: 3
Weight: 91 kg

THE SET INCLUDES:

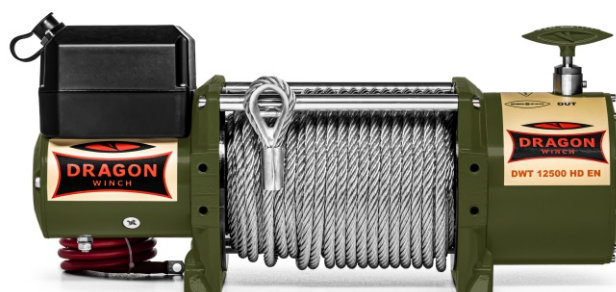
- steel cable
- hook
- mounting screws
- rope tensioner

DRAGON WINCH series EN



DWT 13500 HD EN

Dedicated for: special trucks
Voltage: 12 V or 24 V
Motor: 7,8 hp
Pulling rate: 13500 lb / 6123 kg
Gear train: 3 stage planetary
Reduction ratio: 358:1
Brake: dynamic
Length of the steel cable: 30 m
Overall product dimensions (LxWxH):
 574 mm x 196 mm x 266 mm
Weight: 57 kg
Mounting screws (pcs): 4
Mounting bolt pattern: 254 mm x 114 mm



DWT 12500 HD EN

Dedicated for: special trucks
Voltage: 12 V or 24 V
Motor: 7,8 hp
Pulling rate: 12000 lb / 5443 kg
Gear train: 3 stage planetary
Reduction ratio: 358:1
Brake: dynamic
Length of the steel cable: 30 m
Overall product dimensions (LxWxH):
 574 mm x 196 mm x 266 mm
Weight: 55 kg
Mounting screws (pcs): 4
Mounting bolt pattern: 254 mm x 114 mm

THE SET INCLUDES:

- steel cable
- hook
- control box
- roller guides
- remote control
- and wireless remote control
- mounting screws
- safety switch 300A
- cable tensioner

THE SET INCLUDES:

- steel cable
- hook
- control box
- roller guides
- remote control
- and wireless remote control
- mounting screws
- safety switch 300A
- cable tensioner

Cable winding speed and power consumption (the first cable layer on the drum)

cable load	kg	1814	3629	6123	
cable speed	m/min	5,7	4,4	2,0	0,8
power consumption 12 V	amp	68	157	280	420
power consumption 24 V	amp	40	89	157	235

Cable winding speed and power consumption (the first cable layer on the drum)

cable load	kg	1814	3629	5443	
cable speed	m/min	5,7	4,4	2,0	1,0
power consumption 12 V	amp	68	157	280	370
power consumption 24 V	amp	40	89	157	205

Pulling force depending on cable layer

cable layer		1	2	3	4
cable pull	kg	6123	4837	4163	3613
cable length on the drum	m	4,8	12,0	21,0	30,0

Pulling force depending on cable layer

cable layer		1	2	3	4
cable pull	kg	5443	4477	3854	3344
cable length on the drum	m	4,8	12,0	21,0	30,0



DRAGON WINCH PORTABLE AND ANCHOR WINCHES

PORTABLE WINCHES ARE
FOR UNIVERSAL USE.
DEDICATED FOR:



DRAGON WINCH PORTABLE WINCHES

DWP 5000



Dedicated for: boats

Voltage: 12 V

Motor: 2,9 hp

Pulling rate: 5 000 lb/ 2 265 kg

Reduction ratio: 717:1

Brake: self-braking

Length of the steel cable: 9 m

Winding/unwinding steel cable: electric

Overall product dimensions (LxWxH): 255 mm x 268 mm x 219mm

Weight: 17kg

THE SET INCLUDES:

- wire rope with hook
- mounting plate
- power cable
- hand crank
- remote control

DWP 3500

Dedicated for: boats

Voltage: 12 V

Motor: 1,3 hp

Pulling rate: 3 500 lb / 1 588 kg

Reduction ratio: 717:1

Brake: self-braking

Length of the steel cable: 10 m

Winding/unwinding steel cable: electric

Overall product dimensions (LxWxH): 241 mm x 247 mm x 212 mm

Weight: 15 kg

THE SET INCLUDES:

- wire rope with hook
- mounting plate
- power cable
- hand crank
- remote control





DRAGON WINCH ANCHOR WINCHES

DWA 50 LS

DEDICATED TO FRESH WATER

Dedicated for: boats
Voltage: 12 V
Other electrical parameters: 150W/12.5 Amp
Pulling rate: 50 lb/22 kg
Overall product dimensions (LxWxH): 255 mm x210 mm x 170 mm
Motor: 150 W
Weight: 8 kg
Breaking Strength: 286 kg
Cable Length: 30.5 m
Cable Diameter: 5 mm



DWA 50 MS

DEDICATED TO SALT WATER

Dedicated for: boats
Voltage: 12 V
Other electrical parameters: 150W/12.5 Amp
Pulling rate: 50 lb/22 kg
Overall product dimensions (LxWxH): 255 mm x210 mm x 170 mm
Motor: 150 W
Weight: 8 kg
Breaking Strength: 286 kg
Cable Length: 30.5 m
Cable Diameter: 5 mm





DRAGON
WINCH



DRAGON
WINCH

DRAGON WINCH INDUSTRIAL

THE DRAGON WINCH INDUSTRIAL SERIES – VERY DURABLE
AND SOLID WINCHES WITH A 230 V POWER SUPPLY.

THE OFFER COMPRISES ALSO:
ELECTRICAL TROLLEYS
MANUAL TROLLEYS
GUIDE RAILS.

DRAGON WINCH series INDUSTRIAL



DWI 500/990 HD

Dedicated for: workshops
Voltage: 230 V
Pulling rate with a single cable: 500 kg
Pulling rate with a double cable: 990 kg
Pulling height: 12 m / 6 m
Brake: automatic
Turn - off switches: limit switches
and emergency switches
Remote control: controlling up and down
Weight: 40 kg



DWI 400/800 HD

Dedicated for: workshops
Voltage: 230 V
Pulling rate with a single cable: 400 kg
Pulling rate with a double cable: 800 kg
Pulling height: 12 m / 6 m
Brake: automatic
Turn - off switches: limit switches
and emergency switches
Remote control: controlling up and down
Weight: 18,5 kg



DWI 300/600 HD

Dedicated for: workshops
Voltage: 230 V
Pulling rate with a single cable: 300 kg
Pulling rate with a double cable: 600 kg
Pulling height: 12 m / 6 m
Brake: automatic
Turn - off switches: limit switches
and emergency switches
Remote control: controlling up and down
Weight: 17,5 kg



DWI 125/250 HD

Dedicated for: workshops
Voltage: 230 V
Pulling rate with a single cable: 125 kg
Pulling rate with a double cable: 250 kg
Pulling height: 12 m / 6 m
Brake: automatic
Turn - off switches: limit switches
and emergency switches
Remote control: controlling up and down
Weight: 12 kg

SET OF HOIST WITH ELECTRIC TROLLEY



DWI 300/600 set
DWI 400/800 set
DWI 500/990 set



DRAGON WINCH series INDUSTRIAL



DWI 1 T ELECTRICAL TROLLEY 1 T

Dedicated for: workshops
Nominal lifting: 1 T
Standard operating height: 3 m
Weight: 19 kg



DWI 0,5 T ELECTRICAL TROLLEY 0,5 T

Dedicated for: workshops
Nominal lifting: 0,5 T
Standard operating height: 3 m
Weight: 19 kg



DWI 1 T MANUAL TROLLEY 1 T

Dedicated for: workshops
Nominal lifting: 1 T
Standard operating height: 3 m
Weight: 12 kg



DWI 0,5 T MANUAL TROLLEY 0,5 T

Dedicated for: workshops
Nominal lifting: 0,5 T
Standard operating height: 3 m
Weight: 5 kg



DRAGON WINCH HAND CRANK

WINCHES WITH A STRONG STEEL CONSTRUCTION.
INTENDED FOR PULLING:

DRAGON WINCH series HAND CRANK



DWK 35 VC

Dedicated for: workshops,
tow trucks / industrial vehicles, boats
Max. pulling rate: 3 500 lb / 1 588 kg
Length of the steel cable: 10 m
Diemeter of the steel cable: 6 mm
Weight: 7



DWK 25 C

Dedicated for: workshops,
tow trucks / industrial vehicles, boats
Max. pulling rate: 2 500 lb / 1 133 kg
Length of the steel cable: 10 m
Diemeter of the steel cable: 6 mm
Weight: 6 kg

Winches with friction brake



DWKO 2600 HD

Dedicated for: workshops,
tow trucks / industrial vehicles, boats
Max. pulling rate: 2 600 lb / 1 200 kg
Length of the steel cable: 17 m
Diemeter of the steel cable: 6 mm
Weight: 12 kg



DWKO 1800 HD

Dedicated for: workshops,
tow trucks / industrial vehicles, boats
Max. pulling rate: 1800 lb / 810 kg
Length of the steel cable: 10 m
Diemeter of the steel cable: 5 mm
Weight: 9 kg



DWKO 1200 HD

Dedicated for: workshops,
tow trucks / industrial vehicles, boats
Max. pulling rate: 1200 lb / 540 kg
Length of the steel cable: 10 m
Diemeter of the steel cable: 5 mm
Weight: 4,5 kg



DWKO 800 HD

Dedicated for: workshops,
tow trucks / industrial vehicles, boats
Max. pulling rate: 800 lb / 360 kg
Length of the steel cable: 10 m
Diemeter of the steel cable: 5 mm
Weight: 3,4 kg



DRAGON WINCH series HAND CRANK



DWK 35 V

2-speed winch

Dedicated for: workshops,
tow trucks / industrial vehicles, boats
Max. pulling rate: 3 500 lb / 1 588 kg
Length of the steel cable: 10 m
Diemeter of the steel cable: 6 mm
Weight: 5,7 kg



DWK 25 V

2-speed winch

Dedicated for: workshops,
tow trucks / industrial vehicles, boats
Max. pulling rate: 2 500 lb / 1 133 kg
Length of the steel cable: /belt: 10 m
Diemeter of the steel cable: 6 mm
Weight: 5 kg



DWK 25

Dedicated for: workshops,
tow trucks / industrial vehicles, boats
Max. pulling rate: 2 500 lb / 1 133 kg
Length of the steel cable: /belt: 10 m
Diemeter of the steel cable: 6 mm
Weight: 5 kg



DWK 16

Dedicated for: workshops,
tow trucks / industrial vehicles, boats
Max. pulling rate: 1 600 lb / 725 kg
Length of the steel cable: /belt: 10 m
Diemeter of the steel cable: 5 mm
Weight: 3,4 kg



DWK 12

Dedicated for: workshops,
tow trucks / industrial vehicles, boats
Max. pulling rate: 1200 lb / 540 kg
Length of the steel cable: /belt: 10 m
Diemeter of the steel cable: 4 mm
Weight: 3,2 kg



DRAGON WINCH
CHAIN WINCHES





DRAGON WINCH CHAIN WINCHES



DWI CB 1T 6M

Load capacity: 1T
Lifting height: 6 M
Weight: 16,5 kg



DWI CB 1T 3M

Load capacity: 1T
Lifting height: 3 m
Weight: 12 kg



DWI CB 3T 3M

Load capacity: 3T
Lifting height: 3 m
Weight: 21,5 kg



DWI CB 3T 6M

Load capacity: 3T
Lifting height: 6 m
Weight: 30 kg



DRAGON WINCH ACCESSORIES

THE OFFER COMPRISES SPARE PARTS AND ACCESSOIRES
FOR ALL DRAGON WINCH MODELS.

SELECTED ACCESSOIRES ARE SHOWN IN THE CATALOGUE.

DRAGON WINCH ACCESSORIES



ROPE HOOK

Available:

- 16000-22000 lbs
- 8000-14000 lbs
- ATV



TREE BELT

Available:

- 20 m 5 T
- 9 m 8 T
- 3 m 9 T
- 1,5 m 9 T
- 1,5 m 4 T



SNATCH BLOCK

Available:

- 15 T
- 10 T
- 8 T
- 4 T



SNATCH BLOCK WITH ATV HOOK

Available:

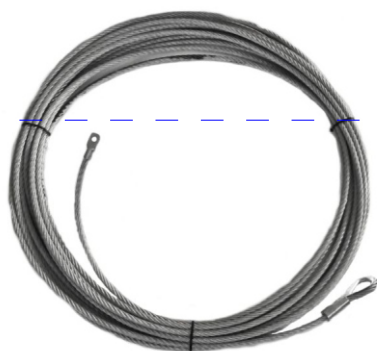
- 2 T



STEEL CABLE

Available:

- 16000-22000 lbs
- 9000-14000 lbs
- 8000 lbs
- ATV 20 m
- ATV 15 m



SHACKLE

Available:

- shackle 1/1 8,5 T
- shackle 7/8 6,5 T
- shackle 3/4 4,75 T
- shackle 5/8 3,25 T



KINETIC ROPE

Available:

- 28mm 12m 22 T
- 28mm 10m 15,5 T
- 28mm 8m 15,5 T
- 28mm 6m 15,5 T



SYNTETIC ROPE

Available:

- 4x4 9000-13000 lbs
- 11 mm 16000 lbs
- 12 mm 18000-22000 lbs
- 4x4 9000-13000 lbs (in protective sleeve)
- TRUCK 16000-18000 lbs (in protective sleeve)
- ATV



THE OFFER COMPRISES ALSO SPECIAL ROPES
- LENGHT, PULLING RATE AND DIAMETER IN ACCORDANCE WITH CUSTOMER NEEDS.



DRAGON WINCH ACCESSORIES

MOUNTING PLATE 4X4

- 10000-13000 lbs (series DWM)



MOUNTING PLATE 4X4 PORTABLE

- Portable
- Mounted in the place of the hook



MOUNTING PLATE

UNIVERSAL

- DWM 12000-13000
- DWT 14000-18000, DWH 9000-15000



MOUNTING PLATE

UNIVERSAL

- ATV



ROPE DAMPENNER



ROLLER GUIDES

Available:

- DWM 12000-13000
- DWM 8000
- DWM 2500-3500 ST
- DWH 9000-15000
- DWH 4500 HDL
- DWH 3000-4500
- DWT 14000-22000
- DWHI 12000-18000
- 12000-20000 lbs SUPER STRONG



FAIRLEAD

- DWM, DWH, DWT 9000-18000
- ATV
- 9000-22000 SUPER STRONG
- 9000-18000 LOGO
- 9000-22000 LED with hook



DRAGON WINCH ACCESSORIES



PILOT STORM DUAL CONTROL

- Lithium-ion battery
- USB-C charging
- Automatic shut-off
- Powerful flashlight
- Built-in magnets
- Battery indicator light



BAG 4X4

- Tree belt 3 m
- 2 x shackle 7/8
- Snatch block 8T
- Gloves



WINCH COVER

Available:

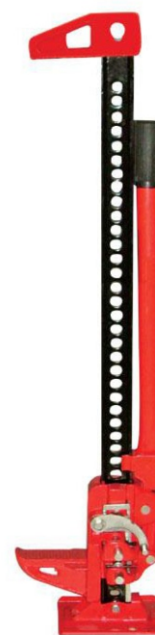
- TRUCK
- 4X4
- ATV
- Farm Jack
- Hand crank winches



FARM JACK

Dostępne:

- Farm Jack 48
- Farm Jack 60

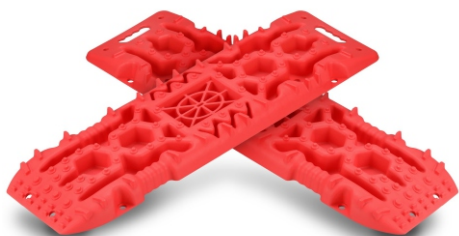


AIR DEFLATOR



TRAPS

Traps are made of strengthened plastic. Ideal for use in swampy areas. Sold in double pack.



HIGH-CURRENT CONNECTORS



10000-22000 lbs
ATV

SAFETY SWITCH



200A
300 A
450 A

DRAGON WINCH COMPRESSORS



DWK-T 300

Voltage: 12 V
Max. amperage: 90 amp
Max. pressure: 150 PSI
Performance: 300 l/min
Continuous operation time: max 15 min
Weight: 7,35 kg



DWK-T 160

Voltage: 12 V
Max. amperage: 45 amp
Max. pressure: 150 PSI
Performance: 160 l/min
Continuous operation time: max 15 min
Weight: 7,35 kg



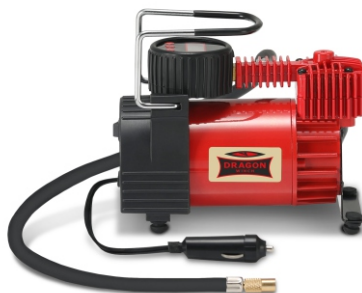
DWK-SL

Voltage: 12 V
Max. pressure: 150 PSI
Performance: 60 l/min
Continuous operation time: max 15 min
Weight: 2,8 kg



DWK-M 150 HD

Voltage: 12 V
Max. amperage: 23 amp
Max. pressure: 150 PSI
Performance: 35 l/min
Continuous operation time: max 15 min



DWK-M 100 HD

Voltage: 12 V
Max. amperage: 12 amp
Max. pressure: 100 PSI
Performance: 35 l/min
Continuous operation time: max 15 min
Weight: 1,5 kg



DWK-AKUM 150

Voltage: 12 V
Max. pressure: 150 PSI
Weight: 1,5 kg



DWK-DUAL

Voltage: 12 V
Max. pressure: 150 PSI
Performance: 60 l/min



DWK-T 200 PREMIUM

Voltage: 12 V
Max. pressure: 150 PSI
Max. amperage: 45 Amp
Performance: 180 l/min

DRAGON WINCH

COMPRESSORS PROFESSIONAL



DWK-PS 500 SHD PORTABLE

Voltage: 12 V
Max. amperage: 35 Amp
Max. pressure: 200 PSI
Operation time: max 60 min
Performance: 108 l/min
Weight: 7 kg



DWK-PS 500 SHD SOLID

Voltage: 12 V
Max. amperage: 23 Amp
Max. pressure: 200 PSI
Operation time: max 60 min
Performance: 50 l/min
Weight: 6 kg



DWK-PS 150 SHD TANK

Voltage: 12 V
Max. amperage: 16 Amp
Max. pressure: 150 PSI
Operation time: max 25 min
Performance: 38 l/min
Weight: 5,5 kg



DWK-PS 150 SHD PORTABLE

Voltage: 12 V
Max. amperage: 16 Amp
Max. pressure: 150 PSI
Operation time: max 25 min
Performance: 54 l/min
Weight: 3 kg



DWK-PS 150 SHD SOLID

Voltage: 12 V
Max. amperage: 16 Amp
Max. pressure: 150 PSI
Operation time: max 25 min
Performance: 38 l/min
Weight: 2,3 kg



DWK-PS 50 SHD TREK

Voltage: 12 V
Max. pressure: 150 PSI
Performance: 20 l/min
Weight: 1 kg

WE OFFER SPARE PARTS FOR ALL WINCHES



This offer does not constitute an offer within the meaning of the Civil Code and other legal provisions. The information contained in this catalogue is provided for information purpose only. The manufacturer reserves the right to make changes without notice and without incurring obligation.

DRAGON WINCH COMPRESSORS



DWK AKUM 30

Voltage: DC 11.1V / DC 12V
Battery Capacity: 2000mAh x3
Power: 80W
Pressure: 150 PSI
Charging Time: 4-5 hours
Performance: max 30min
Weight: 0,8 kg



DWK AKUM 25

Voltage: DC 7.4V
Battery Capacity: 2000mAh x2
Power: 50W
Max. pressure: 150 PSI
Charging times: 3-4 hours
Performance: max 25min
Weight: 0,5 kg





www.dragonwinch.com