



# PRODUCT CATALOGUE

WINCHES FOR MILITARY VEHICLES  
WINCHES FOR INDUSTRIAL CARS  
ATV  
UTV  
INDUSTRIAL WINCHES  
HAND CRANK WINCHES  
ACCESSORIES

# What makes **DRAGON WINCH** exceptional?



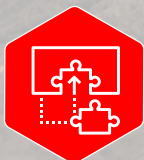
**EXTREME  
QUALITY**

**THE LARGEST SELECTION  
OF WINCHES ON THE MARKET**



**OWN RESEARCH  
AND DEVELOPMENT**

**PROFESSIONAL  
SERVICES**



**INNOVATIVE  
SOLUTIONS**

**AVAILABLE IN  
46 COUNTRIES**





# DRAGON WINCH TRUCK

THE DRAGON WINCH TRUCK SERIES COMPRISES EXTRA STRONG  
AND SOLID WINCHES INTENDED FOR USE IN THE MOST EXTREME CONDITIONS.  
DEDICATED FOR:



special  
vehicles

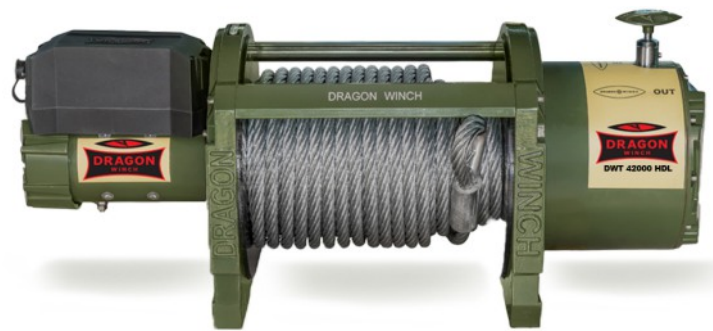


industrial  
vehicles

# DRAGON WINCH series TRUCK



## DWT 42000 HD S



## DWT 42000 HDL

**Dedicated for:** special trucks,  
tow trucks / industrial vehicles

**Voltage:** 24 V

**Motor:** 12,5 hp

**Pulling rate:** 42000 lb / 19050 kg

**Reduction ratio:** 600:1

**Gear train:** 4 stage planetary

**Brake:** dynamic

**Length of the steel cable:** 35 m

**Overall product dimensions (LxWxH):**

775 mm x 353 mm x 366 mm

**Weight:** 132 kg

**Mounting bolt pattern:** 263 mm x 114 mm  
/ 263 mm x 224 mm

**Dedicated for:** special trucks,  
tow trucks / industrial vehicles

**Voltage:** 24 V

**Motor:** 12,5 hp

**Pulling rate:** 42000 lb / 19050 kg

**Reduction ratio:** 600:1

**Gear train:** 4 stage planetary

**Brake:** dynamic

**Length of the steel cable:** 35 m(max. 62 m)

**Overall product dimensions (LxWxH):**

887 mm x 353 mm x 306 mm

**Weight:** 176 kg

**Mounting bolt pattern:** 375 mm x 114 mm  
/ 375 mm x 224 mm

### THE SET INCLUDES:

- synthetic rope
- hook
- control box
- remote control
- and wireless remote control
- mounting screws
- rope clamp
- sliding guide

### THE SET INCLUDES:

- steel cable
- hook
- control box
- roller guide
- remote control
- and wireless remote control
- mounting screws
- rope clamp
- sliding guide

### Cable winding speed and power consumption (the first cable layer on the drum)

cable load	kg	0	5715	11430	19050
cable speed	m/min	2,2	1,51	0,86	0,43
power consumption 24 V	amp	25	132	240	383

### Cable winding speed and power consumption (the first cable layer on the drum)

cable load	kg	5715	11430	19050	
cable speed	m/min	2,1	1,49	0,85	0,43
power consumption 24 V	amp	25	132	240	383

### Pulling force depending on cable layer

cable layer		1	2	3	4	5
cable pull	kg	19050	15262	12731	10920	9560
cable length on the drum	m	5,16	11,61	19,33	28,34	35

### Pulling force depending on cable layer

cable layer		1	2	3	4
cable pull	kg	19050	15421	12954	11167
cable length on the drum	m	8,54	19,09	31,65	35

# DRAGON WINCH series TRUCK



## DWT 30000 HD

**Dedicated for:** special trucks,  
tow trucks / industrial vehicles  
**Voltage:** 24 V  
**Motor:** 10,5 hp  
**Pulling rate:** 30000 lb / 13605 kg  
**Reduction ratio:** 463:1  
**Gear train:** 3 stage planetary  
**Brake:** dynamic  
**Length of the steel cable:** 30 m  
**Overall product dimensions (LxWxH):**  
745 mm x 217 mm x 271 mm  
**Weight:** 94 kg  
**Mounting screws (pcs):** 12  
**Mounting bolt pattern:** 365 mm x 114 mm  
/ 365 mm x 164 mm

### THE SET INCLUDES:

- steel cable
- hook
- control box
- remote control
- and wireless remote control
- mounting screws
- rope tensioner



## DWT 22000 HD

**Dedicated for:** special trucks,  
tow trucks / industrial vehicles  
**Voltage:** 24 V  
**Motor:** 9,5 hp  
**Pulling rate:** 22000 lb / 9979 kg  
**Reduction ratio:** 463:1  
**Gear train:** 3 stage planetary  
**Brake:** dynamic  
**Length of the steel cable:** 30 m  
**Length of the synthetic rope:** 21 m  
**Overall product dimensions (LxWxH):**  
637 mm x 217 mm x 271 mm  
**Weight:** 80 kg  
**Mounting screws (pcs):** 8  
**Mounting bolt pattern:** 254 mm x 114 mm  
/ 254 mm x 164 mm

### THE SET INCLUDES:

- steel cable or synthetic rope
- hook
- control box
- roller guides or aluminum fairlead
- remote control
- and wireless remote control
- mounting screws

### Cable winding speed and power consumption (the first cable layer on the drum)

cable load	kg	0	3400	6800	13605
cable speed	m/min	2,62	2,22	1,8	1,0
power consumption 24 V	amp	45	152	313	414

### Cable winding speed and power consumption (the first cable layer on the drum)

cable load	kg	2721	5443	9979	
cable speed	m/min	4,5	3,7	3,0	1,7
power consumption 24 V	amp	42	112	232	305

### Pulling force depending on cable layer

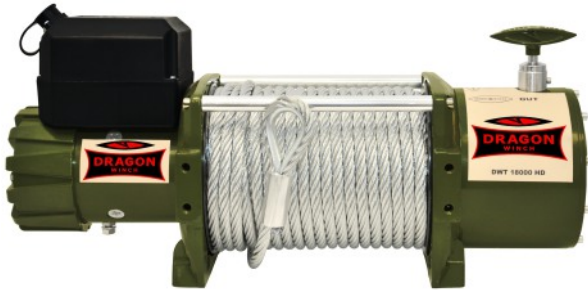
cable layer		1	2	3
cable pull	kg	13605	10830	9550
cable length on the drum	m	8,6	18,8	30

### Pulling force depending on cable layer

cable layer		1	2	3	4	5
cable pull	kg	9979	7883	6786	5887	4889
cable length on the drum	m	5,1	11,1	18,4	26,5	30,0



# DRAGON WINCH series TRUCK



## DWT 18000 HD

**Dedicated for:** off-road vehicles,  
tow trucks / industrial vehicles  
**Voltage:** 24 V  
**Motor:** 9,0 hp  
**Pulling rate:** 18000 lb / 8165 kg  
**Gear train:** 3 stage planetary  
**Reduction ratio:** 358:1  
**Brake:** dynamic  
**Length of the steel cable:** 30 m  
**Length of the synthetic rope:** 21 m  
**Overall product dimensions (LxWxH):**  
586 mm x 196 mm x 265 mm  
**Weight:** 63 kg  
**Mounting screws (pcs):** 4  
**Mounting bolt pattern:** 254 mm x 114 mm

### THE SET INCLUDES:

- steel cable or synthetic rope
- hook
- control box
- roller guides
- or aluminum fairlead
- remote control
- and wireless remote control
- mounting screws



## DWT 16000 HD

**Dedicated for:** off-road vehicles,  
tow trucks / industrial vehicles  
**Voltage:** 12 V or 24 V  
**Motor:** 7,8 hp  
**Pulling rate:** 16000 lb / 7257 kg  
**Gear train:** 3 stage planetary  
**Reduction ratio:** 358:1  
**Brake:** dynamic  
**Length of the steel cable:** 30 m  
**Length of the synthetic rope:** 21 m  
**Overall product dimensions (LxWxH):**  
574 mm x 196 mm x 266 mm  
**Weight:** 62 kg  
**Mounting screws (pcs):** 4  
**Mounting bolt pattern:** 254 mm x 114 mm

### THE SET INCLUDES:

- steel cable or synthetic rope
- hook
- control box
- roller guides
- or aluminum fairlead
- remote control
- and wireless remote control
- mounting screws

### Cable winding speed and power consumption (the first cable layer on the drum)

cable load	kg	2721	5443	8165	
cable speed	m/min	5,5	4,1	3,1	1,5
power consumption 24 V	amp	39	105	214	280

### Cable winding speed and power consumption (the first cable layer on the drum)

cable load	kg	2902	5806	7257	
cable speed	m/min	5,3	3,9	2,7	1,3
power consumption 12 V	amp	64	114	231	440
power consumption 24 V	amp	39	108	219	250

### Pulling force depending on cable layer

cable layer		1	2	3	4	5
cable pull	kg	8165	6450	5552	4817	4001
cable length on the drum	m	5,2	11,4	19,0	27,8	30,0

### Pulling force depending on cable layer

cable layer		1	2	3	4	5
cable pull	kg	7257	6020	5182	4496	3734
cable length on the drum	m	5,3	11,5	19,3	27,9	30,0

# DRAGON WINCH series TRUCK



## DWT 16000 HDL

**Dedicated for:** special trucks  
**Voltage:** 12 V or 24 V  
**Motor:** 7,8 hp  
**Pulling rate:** 16000 lb / 7257 kg  
**Gear train:** 3 stage planetary  
**Reduction ratio:** 358:1  
**Brake:** dynamic  
**Length of the steel cable:** 60 m  
**Overall product dimensions (LxWxH):**  
 792 mm x 196 mm x 266 mm  
**Weight:** 80kg  
**Mounting screws (pcs):** 4  
**Mounting bolt pattern:** 480 mm x 114 mm



## DWT 14000 HD

**Dedicated for:** special trucks,  
 tow trucks / industrial vehicles  
**Voltage:** 12 V or 24 V  
**Motor:** 7,8 hp  
**Pulling rate:** 14000 lb / 6350 kg  
**Gear train:** 3 stage planetary  
**Reduction ratio:** 265:1  
**Brake:** dynamic  
**Length of the steel cable:** 20 m  
**Overall product dimensions (LxWxH):**  
 537 mm x 159 mm x 246 mm  
**Weight:** 40 kg  
**Mounting screws (pcs):** 4  
**Mounting bolt pattern:** 254 mm x 114 mm

### THE SET INCLUDES:

- hook
- control box
- remote control
- and wireless remote control
- mounting screws
- rope tensioner

### THE SET INCLUDES:

- steel cable
- hook
- control box
- roller guides
- remote control
- and wireless remote control
- mounting screws

### Cable winding speed and power consumption (the first cable layer on the drum)

cable load	kg	2902	5806	7257	
cable speed	m/min	5,3	3,9	2,7	1,3
power consumption 12 V	amp	64	114	231	440
power consumption 24 V	amp	39	108	219	250

### Cable winding speed and power consumption (the first cable layer on the drum)

cable load	kg	2721	5443	6350	
cable speed	m/min	6	4,5	2,9	1,1
power consumption 12 V	amp	61	206	359	418
power consumption 24 V	amp	38	103	207	240

### Pulling force depending on cable layer

cable layer		1	2	3	4
cable pull	kg	7257	6020	5182	4496
cable length on the drum	m	12,7	28,1	46,4	60,0

### Pulling force depending on cable layer

cable layer		1	2	3	4
cable pull	kg	6350	5016	4318	3746
cable length on the drum	m	4,8	10,8	17,5	20,0



# DRAGON WINCH HIDRA

THE DRAGON WINCH HIDRA SERIES. HYDRAULIC WINCHES.  
A VERY LONG PRODUCT LIFESPAN AND A HIGH RESISTANCE  
TO EXTREMELY HARD WORKING CONDITIONS.  
DEDICATED FOR



special  
vehicles



industrial  
vehicles

# DRAGON WINCH series HIDRA



## DWHI 20000 HD

**Dedicated for:** special trucks, tow trucks / industrial vehicles

**Power:** hydraulic

**Pulling rate:** 20000 lb / 9072 kg

**Pulling force depending on steel cable layer:**

- first layer of steel cable: 9072 kg
- last layer of steel cable: 6187 kg

**Steel cable winding speed:**

- first layer of steel cable: 4,2 m / min
- last layer of steel cable: 5,6 m / min

**Max oil pressure:** 17,5 Mpa

**Max oil flow:** 60 l / min

**Overall product dimensions (LxWxH):**

590 mm x 269 mm x 217 mm

**Drum capacity:** 31 m

**Number of steel cable layers:** 4

**Weight:** 72 kg



## DWHI 16000 HD

**Dedicated for:** special trucks, tow trucks / industrial vehicles

**Power:** hydraulic

**Pulling rate:** 16000 lb / 7257 kg

**Pulling force depending on steel cable layer:**

- first layer of steel cable: 7257 kg
- last layer of steel cable: 4944 kg

**Steel cable winding speed:**

- first layer of steel cable: 4,2 m / min
- last layer of steel cable: 5,6 m / min

**Max oil pressure:** 17,5 Mpa

**Max oil flow:** 60 l / min

**Overall product dimensions (LxWxH):**

590 mm x 269 mm x 217 mm

**Drum capacity:** 31 m

**Number of steel cable layers:** 4

**Weight:** 72 kg

### THE SET INCLUDES:

- hook
- roller guides
- mounting screws
- steel cable (for self-winding)

### THE SET INCLUDES:

- hook
- roller guides
- mounting screws
- steel cable (for self-winding)

# DRAGON WINCH series HIDRA



## DWHI 12000 HD

**Dedicated for:** special trucks, tow trucks / industrial vehicles

**Power:** hydraulic

**Pulling rate:** 12000 lb / 5443 kg

**Pulling force depending on steel cable layer:**

- first layer of steel cable: 5443 kg

- last layer of steel cable: 2851 kg

**Steel cable winding speed:**

- first layer of steel cable: 4,4 m / min

- last layer of steel cable: 6,8 m / min

**Max oil pressure:** 16 Mpa

**Max oil flow:** 40 l / min

**Overall product dimensions (LxWxH):**

590 mm x 269 mm x 217 mm

**Drum capacity:** max 45 m

**Number of steel cable layers:** max 5

**Weight:** 55 kg

### THE SET INCLUDES:

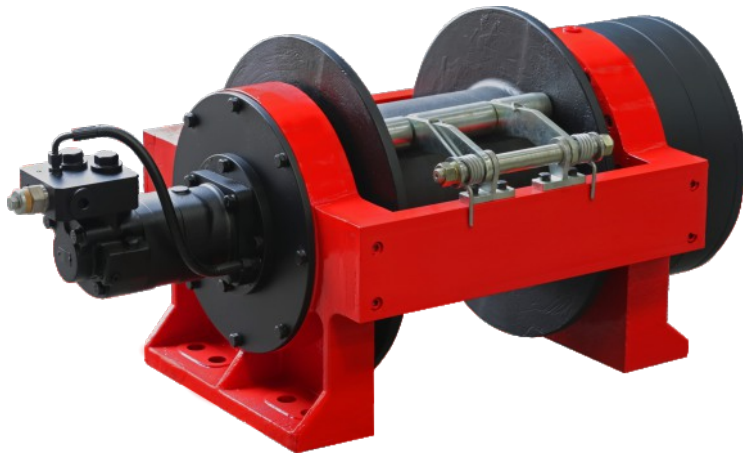
- hook
- roller guides
- mounting screws
- steel cable (for self-winding)





# DRAGON WINCH series HIDRA

## DWHI 660 HD



**Dedicated for:** special trucks,  
tow trucks / industrial vehicles

**Power supply:** hydraulic

**Pulling rate:** 66 000 lb / 30 000 kg

**Speed of the steel cable:** 5,5 m/min

**Pressure of oil:** 17 / 170 MPa/Bar

**Oil flow:** 120 l/min

**Overall product dimensions (LxWxH):**

1 337 mm x 618 mm x 530 mm

**Size of the drum (LxWxH):** 530 mm x 280 mm x 360 mm

**Capacity of the drum:** 54 m (max recommended length of the steel cable on the drum)

**Weight:** 570 kg

## DWHI 450 HD

**Dedicated for:** special trucks, tow trucks / industrial vehicles

**Power supply:** hydraulic

**Pulling rate:** 45 000 lb / 20 000 kg

**Speed of the steel cable:** 6 m/min

**Pressure of oil:** 17/170 MPa/Bar

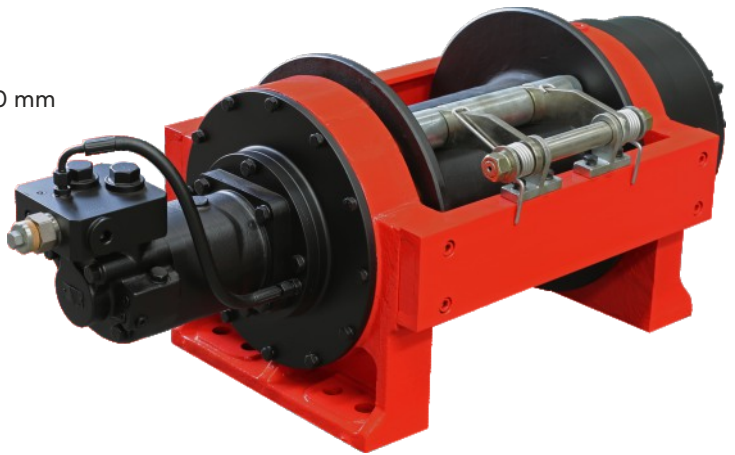
**Oil flow:** 120 l/min

**Overall product dimensions (LxWxH):** 1 250 mm x 480 mm x 400 mm

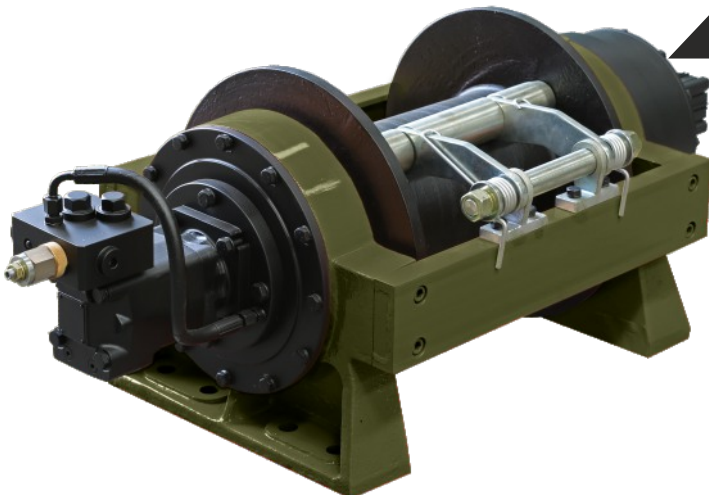
**Size of the drum (LxWxH):** 400 mm x 210 mm x 340 mm

**Capacity of the drum:** 45 m (max recommended length of the steel cable on the drum)

**Weight:** 295 kg



## DWHI 300 HD



**Dedicated for:** special trucks,  
tow trucks / industrial vehicles

**Power supply:** hydraulic

**Pulling rate:** 30 000 lb / 13 605 kg

**Speed of the steel cable:** 7 m /min

**Pressure of oil:** 17/170 MPa/Bar

**Oil flow:** 60 l/min

**Overall product dimensions (LxWxH):**

1 120 mm x 470 mm x 410 mm

**Size of the drum (LxWxH):** 390 mm x 190 mm x 340 mm

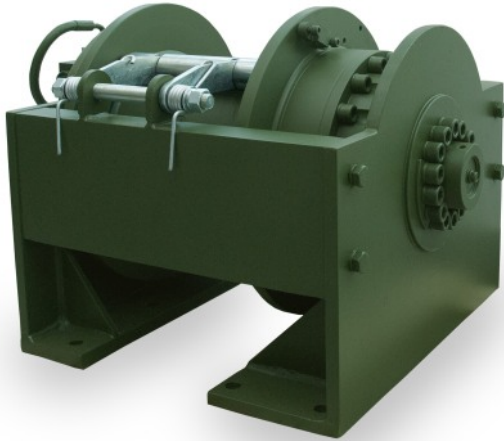
**Capacity of the drum:** 59 m (max recommended length of the steel cable on the drum)

**Weight:** 265 kg



# DRAGON WINCH series HIDRA

## DWHI 220 HD A



**Dedicated for:** special trucks,  
tow trucks / industrial vehicles

**Power supply:** hydraulic

**Pulling rate:** 22 000 lb / 10 000 kg

**Speed of the steel cable:** 7 m/min

**Pressure of oil:** 16/160 MPa/Bar

**Oil flow:** 70 l/min

**Overall product dimensions (LxWxH):** 640 mm x 500 mm x 430 mm

**Capacity of the drum:** 60 m

**Weight:** 264 kg

## DWHI 220 HD B

**Dedicated for:** special trucks,  
tow trucks / industrial vehicles

**Power supply:** hydraulic

**Pulling rate:** 22 000 lb / 10 000 kg

**Speed of the steel cable:** 7 m/min

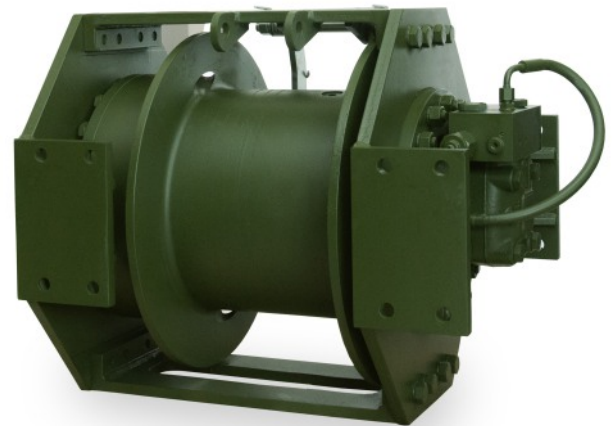
**Pressure of oil:** 18/180 MPa/Bar

**Oil flow:** 72 l/min

**Overall product dimensions (LxWxH):** 660 mm x 470 mm x 505 mm

**Capacity of the drum:** 60 m

**Weight:** 324 kg



## DWHI 33 HD

**Dedicated for:** big tow trucks, mobile crane

**Power supply:** hydraulic

**Pulling rate:** 3 310 lb / 1 500 kg

**Speed of the steel rope:** 38 m/min

**Pressure of oil:** 16/160 MPa/Bar

**Oil flow:** 55 l/min

**Overall product dimensions (LxWxH):** 324 mm x 267 mm x 295 mm

**Capacity of the drum:** 31 m

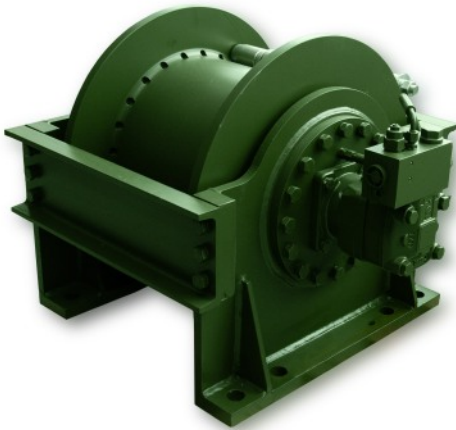
**Weight:** 48 kg



# DRAGON WINCH series HIDRA

## DWHI 240 HD EN

**Dedicated for:** special trucks, tow trucks / industrial vehicles  
**Power supply:** hydraulic  
**Pulling rate:** 24 000 lb/ 10 886 kg / **10 000 kg EN**  
**Speed of the steel cable:** 5 m/min  
**Pressure of oil:** 16/160 MPa/Bar  
**Oil flow:** 15-60 l/min  
**Overall product dimensions (LxWxH):** 660 mm x 384 mm x 349 mm  
**Capacity of the drum:** 40 m  
**Weight:** 199 kg

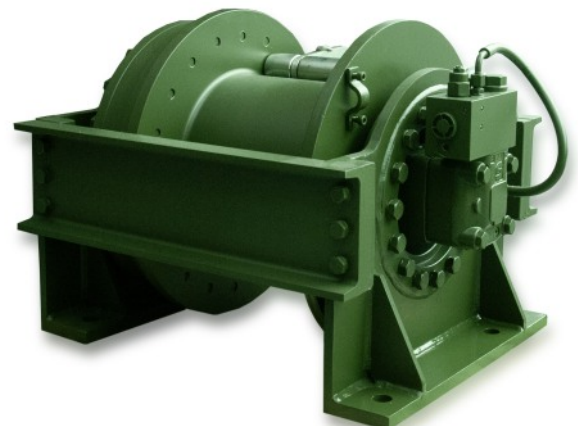


## DWHI 550 HD SPECIAL

**Dedicated for:** special trucks,  
tow trucks / industrial vehicles  
**Power supply:** hydraulic  
**Pulling rate:** 55 000 lb/ 24 948 kg  
**Speed of the steel cable:** 4,7 m/min  
**Pressure of oil:** 18 / 180 MPa/Bar  
**Oil flow:** 80 l/min  
**Overall product dimensions (LxWxH):** 764 mm x 660 mm x 570 mm  
**Capacity of the drum:** 47 m (max recommended length  
of the steel cable on the drum)  
**Weight:** 535 kg

## DWHI 450 HD SPECIAL

**Dedicated for:** special trucks, tow trucks / industrial vehicles  
**Power supply:** hydraulic  
**Pulling rate:** 45 000 lb/ 20 412 kg  
**Speed of the steel cable:** 7,5 m/min  
**Pressure of oil:** 18/180 MPa/Bar  
**Oil flow:** 80 l/min  
**Overall product dimensions (LxWxH):** 675 mm x 575 mm x 490 mm  
**Capacity of the drum:** 52 m (max recommended length  
of the steel cable on the drum)  
**Weight:** 405 kg





# DRAGON WINCH MAVERICK

THE DRAGON WINCH MAVERICK SERIES COMPRISES PROVEN AND TOUGH WINCHES INTENDED FOR MANY DIFFERENT KINDS OF USE. DEDICATED FOR



special vehicles



medium and small off-road vehicles



car transporters



ATV



ploughs



# DRAGON WINCH series MAVERICK



## DWM 13000 HD

**Dedicated for:** off-road vehicles,  
tow trucks/ industrial vehicles  
**Voltage:** 12 V or 24 V  
**Motor:** 6,8 hp  
**Pulling rate:** 13000 lb / 5897 kg  
**Gear train:** 3 stage planetary  
**Reduction ratio:** 265:1  
**Brake:** dynamic  
**Length of the steel cable:** 20/30 m  
**Length of the synthetic rope:** 20/30 m  
**Overall product dimensions (LxWxH):**  
537 mm x 166 mm x 228 mm  
**Weight:** 39 kg  
**Mounting screws (pcs):** 4  
**Mounting bolt pattern:** 254 mm x 114 mm

### THE SET INCLUDES:

- steel cable or synthetic rope
- hook
- control box
- roller guides
- or aluminum fairlead
- remote control
- and wireless remote control
- mounting screws

### Cable winding speed and power consumption (the first cable layer on the drum)

cable load	kg	1814	3629	5897	
cable speed	m/min	5,9	4,4	2,8	0,8
power consumption 12 V	amp	58	158	314	448
power consumption 24 V	amp	35	89	178	245

### Pulling force depending on cable layer

cable layer		1	2	3	4	5
cable pull	kg	5897	4658	4009	3463	2889
cable lenght on the drum	m	4,9	11,0	17,8	26,0	30,0



## DWM 13000 ST

**Dedicated for:** off-road vehicles,  
tow trucks/ industrial vehicles  
**Voltage:** 12 V  
**Motor:** 6,8 hp  
**Pulling rate:** 13000 lb / 5897 kg  
**Gear train:** 3 stage planetary  
**Reduction ratio:** 265:1  
**Brake:** dynamic  
**Length of the steel cable:** 20/30 m  
**Length of the synthetic rope:** 20/30 m  
**Overall product dimensions (LxWxH):**  
546 mm x 166 mm x 244mm  
**Weight:** 39 kg  
**Mounting screws (pcs):** 4  
**Mounting bolt pattern:** 254 mm x 114 mm

### THE SET INCLUDES:

- steel cable or synthetic rope
- hook
- control box
- roller guides
- or aluminum fairlead
- remote control
- and wireless remote control
- mounting screws

### Cable winding speed and power consumption (the first cable layer on the drum)

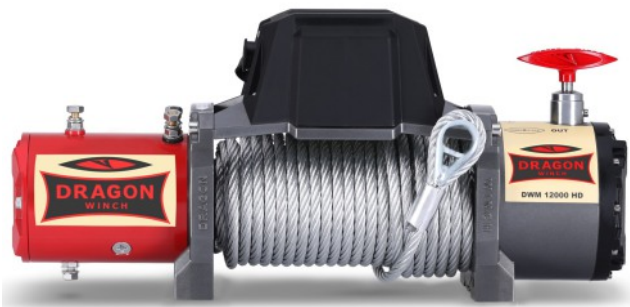
cable load	kg	1814	3629	5897	
cable speed	m/min	5,9	4,4	2,8	0,8
power consumption 12 V	amp	58	158	314	448
power consumption 24 V	amp	35	89	178	245

### Pulling force depending on cable layer

cable layer		1	2	3	4	5
cable pull	kg	5897	4658	4009	3463	2889
cable lenght on the drum	m	4,9	11,0	17,8	26,0	30,0

# DRAGON WINCH

## series MAVERICK



### DWM 12000 HD

**Dedicated for:** off-road vehicles, tow trucks/ industrial vehicles  
**Voltage:** 12 V or 24 V  
**Motor:** 6,8 hp  
**Pulling rate:** 12000 lb / 5443 kg  
**Gear train:** 3 stage planetary  
**Reduction ratio:** 265:1  
**Brake:** dynamic  
**Length of the steel cable:** 20/30 m  
**Length of the synthetic rope:** 20/30 m  
**Overall product dimensions (LxWxH):** 537 mm x 166 mm x 244 mm  
**Weight:** 41 kg  
**Mounting screws (pcs):** 4  
**Mounting bolt pattern:** 254 mm x 114 mm

#### THE SET INCLUDES:

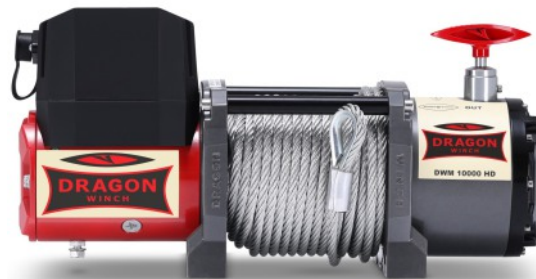
- steel cable or synthetic rope
- hook
- control box
- roller guides or aluminum fairlead
- remote control and wireless remote control
- mounting screws

#### Cable winding speed and power consumption (the first cable layer on the drum)

cable load	kg	1814	3629	5443	
cable speed	m/min	5,9	4,4	2,8	0,9
power consumption 12 V	amp	58	158	314	415
power consumption 24 V	amp	35	89	178	225

#### Pulling force depending on cable layer

cable layer		1	2	3	4	5
cable pull	kg	5443	4299	3701	3211	2667
cable lenght on the drum	m	5,3	11,5	18,6	27,3	30,0



### DWM 10000 HD

**Dedicated for:** off-road vehicles, tow trucks/ industrial vehicles  
**Voltage:** 12 V  
**Motor:** 6,8 hp  
**Pulling rate:** 10 000 lb / 4536 kg  
**Gear train:** 3 stage planetary  
**Reduction ratio:** 265:1  
**Brake:** dynamic  
**Length of the steel cable:** 24 m  
**Length of the synthetic rope:** 25 m  
**Overall product dimensions (LxWxH):** 450 mm x 159 mm x 243mm  
**Weight:** 35 kg  
**Mounting screws (pcs):** 4  
**Mounting bolt pattern:** 164 mm x 114 mm

#### THE SET INCLUDES:

- steel cable or synthetic rope
- hook
- control box
- roller guides or aluminum fairlead
- remote control and wireless remote control
- mounting screw

#### Cable winding speed and power consumption (the first cable layer on the drum)

cable load	kg	1814	4536	
cable speed	m/min	5,9	3,6	1,3
power consumption 12 V	amp	50	180	390

#### Pulling force depending on cable layer

cable layer		1	2	3	4	5
cable pull	kg	4536	3583	3084	2676	2270
cable lenght on the drum	m	3,6	7,8	12,4	17,8	24,0

# DRAGON WINCH

## series MAVERICK



### DWM 4000 ST

**Dedicated for:** ATV / UTV, ploughs  
**Voltage:** 12 V  
**Motor:** 1,6 hp  
**Pulling rate:** 4000 lb / 1814 kg  
**Gear train:** single  
**Reduction ratio:** 153:1  
**Brake:** self-braking  
**Length of the steel cable:** 15 m  
**Length of the synthetic rope:** 11 m  
**Overall product dimensions (LxWxH):**  
 320 mm x 100 mm x 100 mm  
**Weight:** 10 kg  
**Mounting screws (pcs):** 4  
**Mounting bolt pattern:** 130 mm x 80 mm

#### THE SET INCLUDES:

- steel cable or synthetic rope
- hook
- control box
- roller guides
- or aluminum fairlead
- universal mounting plate
- switch on the steering wheel and wireless remote control
- mounting screws



### DWM 3000 ST

**Dedicated for:** ATV / UTV, ploughs  
**Voltage:** 12 V  
**Motor:** 1,4 hp  
**Pulling rate:** 3000 lb / 1360 kg  
**Gear train:** single  
**Reduction ratio:** 153:1  
**Brake:** self-braking  
**Length of the steel cable:** 10 m  
**Length of the synthetic rope:** 10 m  
**Overall product dimensions (LxWxH):**  
 280 mm x 100 mm x 110 mm  
**Weight:** 9 kg  
**Mounting screws (pcs):** 2  
**Mounting bolt pattern:** 79 mm

#### THE SET INCLUDES:

- steel cable or synthetic rope
- hook
- control box
- roller guides
- or aluminum fairlead
- universal mounting plate
- switch on the steering wheel and wireless remote control
- mounting screws

#### Cable winding speed and power consumption (the first cable layer on the drum)

cable load	kg	453	907	1814	
cable speed	m/min	3,9	2,7	1,8	0,6
power consumption 12 V	amp	17	39	78	138

#### Cable winding speed and power consumption (the first cable layer on the drum)

cable load	kg	453	1360	
cable speed	m/min	3,5	2,4	0,8
power consumption 12 V	amp	11	53	133

#### Pulling force depending on cable layer

cable layer	1	2	3	4	5	6	
cable pull	kg	1814	1434	1233	1071	889	707
cable length on the drum	m	1,6	3,5	5,7	8,4	11,3	15,0

#### Pulling force depending on cable layer

cable layer	1	2	3	4	5	
cable pull	kg	1360	1074	924	802	667
cable length on the drum	m	1,5	3,4	5,5	8,2	10,0



# DRAGON WINCH series MAVERICK



## DWM 2000 ST

**Dedicated for:** ATV / UTV, ploughs

**Voltage:** 12 V

**Motor:** 1,4 hp

**Pulling rate:** 2000 lb / 907 kg

**Gear train:** single

**Reduction ratio:** 153:1

**Brake:** self-braking

**Length of the steel cable:** 10 m

**Length of the synthetic rope:** 10 m

**Overall product dimensions (LxWxH):**

280 mm x 100 mm x 110mm

**Weight:** 6 kg

**Mounting screws (pcs):** 2

**Mounting bolt pattern:** 79 mm

### THE SET INCLUDES:

- steel cable or synthetic rope
- hook
- control box
- aluminum fairlead for synthetic rope
- switch on the steering wheel
- mounting screws

### Cable winding speed and power consumption (the first cable layer on the drum)

cable load	kg	453	907	
cable speed	m/min	3,5	2,4	1,0
power consumption 12 V	amp	11	53	95

### Pulling force depending on cable layer

cable layer		1	2	3	4	5
cable pull	kg	907	716	617	535	444
cable lenght on the drum	m	1,8	3,8	6,2	8,9	10,0





# DRAGON WINCH HIGHLANDER

THE DRAGON WINCH HIGHLANDER SERIES HAS BEEN CREATED FOR OFF-ROAD VEHICLES. WITH A STRONGER MOTOR, HEAVY DUTY GEARBOX, DYNAMIC BRAKE AND REINFORCED CONSTRUCTION, IT IS THE BEST OPTION IN EXTREME OPERATING CONDITIONS. DEDICATED FOR:



off-road  
vehicles



extreme  
ATV



UTV



# DRAGON WINCH series HIGHLANDER



## DWH 15000 HD

**Dedicated for:** off-road vehicles  
**Voltage:** 12 V  
**Motor:** 9 hp  
**Pulling rate:** 15000 lb / 6803 kg  
**Gear train:** 3 stage planetary  
**Reduction ratio:** 274:1  
**Brake:** dynamic  
**Length of the steel cable:** 28 m  
**Length of the synthetic rope:** 21 m  
**Overall product dimensions (LxWxH):**  
 578 mm x 175 mm x 260 mm  
**Weight:** 53 kg  
**Mounting screws (pcs):** 4  
**Mounting bolt pattern:** 254 mm x 114 mm

### THE SET INCLUDES:

- steel cable or synthetic rope
- hook
- control box
- roller guides
- or aluminum fairlead
- remote control
- and wireless remote control
- mounting screws

### Cable winding speed and power consumption (the first cable layer on the drum)

cable load	kg	1814	3629	6803	
cable speed	m/min	6,5	5,2	3,8	1,5
power consumption 12 V	amp	65	177	353	483

### Pulling force depending on cable layer

cable layer		1	2	3	4	5
cable pull	kg	6803	5372	4626	4014	3333
cable length on the drum	m	5,2	11,0	18,3	26,6	28,0



## DWH 12000 HD

**Dedicated for:** off-road vehicles  
**Voltage:** 12 V  
**Motor:** 9 hp  
**Pulling rate:** 12000 lb / 5443 kg  
**Gear train:** 3 stage planetary  
**Reduction ratio:** 274:1  
**Brake:** dynamic  
**Length of the steel cable:** 28 m  
**Length of the synthetic rope:** 30 m  
**Overall product dimensions (LxWxH):**  
 578 mm x 175 mm x 260 mm  
**Weight:** 48 kg  
**Mounting screws (pcs):** 4  
**Mounting bolt pattern:** 254 mm x 114 mm

### THE SET INCLUDES:

- steel cable or synthetic rope
- hook
- control box
- roller guides
- or aluminum fairlead
- remote control
- and wireless remote control
- mounting screws

### Cable winding speed and power consumption (the first cable layer on the drum)

cable load	kg	1814	3629	5443	
cable speed	m/min	6,5	5,2	3,8	2,0
power consumption 12 V	amp	65	177	353	470

### Pulling force depending on cable layer

cable layer		1	2	3	4
cable pull	kg	5443	4299	3701	3211
cable length on the drum	m	5,8	12,7	20,0	28,0

# DRAGON WINCH series HIGHLANDER



superfast



## DWH 9000 HD

**Dedicated for:** off-road vehicles  
**Voltage:** 12 V  
**Motor:** 9 hp  
**Pulling rate:** 9000 lb / 4082 kg  
**Gear train:** 3 stage planetary  
**Reduction ratio:** 140:1  
**Brake:** dynamic  
**Length of the steel cable:** 28 m  
**Length of the synthetic rope:** 30 m.  
**Overall product dimensions (LxWxH):**  
 578 mm x 175 mm x 260 mm  
**Weight:** 46 kg  
**Mounting screws (pcs):** 4  
**Mounting bolt pattern:** 254 mm x 114 mm

### THE SET INCLUDES:

- steel cable or synthetic rope
- hook
- control box
- roller guides
- or aluminum fairlead
- remote control
- and wireless remote control
- mounting screws

### Cable winding speed and power consumption (the first cable layer on the drum)

cable load	kg	1814	3629	4082	
cable speed	m/min	10,9	8,8	6,2	5,4
power consumption 12 V	amp	70	211	422	480

### Pulling force depending on cable layer

cable layer		1	2	3	4
cable pull	kg	4082	3225	2776	2408
cable lenght on the drum	m	6,2	13,8	22,0	28,0



## DWH 6000 HD S

**Dedicated for:** ATV/UTV  
**Voltage:** 12 V  
**Motor:** 1,9 hp  
**Pulling rate:** 6000 lb / 2721 kg  
**Gear train:** 3 stage planetary  
**Reduction ratio:** 166:1  
**Brake:** automatic  
**Length of the synthetic rope:** 15 m  
**Overall product dimensions (LxWxH):**  
 386 mm x 114 mm x 115 mm  
**Weight:** 12 kg  
**Mounting screws (pcs):** 4  
**Mounting bolt pattern:** 168 mm x 76 mm

### THE SET INCLUDES:

- synthetic rope
- hook
- control box
- fairlead
- switch on the steering wheel
- and wireless remote control
- mounting screws
- mounting plate

### Cable winding speed and power consumption (the first cable layer on the drum)

cable load	kg	453	907	2721	
cable speed	m/min	5,8	4,3	3,8	1,9
power consumption 12 V	amp	25	32	64	170

### Pulling force depending on cable layer

cable layer		1	2	3	4
cable pull	kg	2721	2150	1849	1609
cable lenght on the drum	m	3,25	7,28	12,08	15



# DRAGON WINCH series HIGHLANDER



## DWH 4500 HD S

**Dedicated for:** ATV/UTV  
**Voltage:** 12 V  
**Motor:** 1,9 hp  
**Pulling rate:** 4500 lb / 2041 kg  
**Gear train:** 3 stage planetary  
**Reduction ratio:** 138:1  
**Brake:** automatic  
**Length of the steel cable:** 15 m (max 20 m.)  
**Overall product dimensions (LxWxH):**  
 386 mm x 114 mm x 115 mm  
**Weight:** 14 kg  
**Mounting screws (pcs):** 4  
**Mounting bolt pattern:** 168 mm x 76 mm

### THE SET INCLUDES:

- steel cable or synthetic rope
- hook
- control box
- roller guides
- switch on the steering wheel and wireless remote control
- mounting screws



## DWH 4500 HD

**Dedicated for:** ATV/UTV  
**Voltage:** 12 V  
**Motor:** 1,9 hp  
**Pulling rate:** 4500 lb / 2041 kg  
**Gear train:** 3 stage planetary  
**Reduction ratio:** 138:1  
**Brake:** automatic  
**Length of the steel cable:** 15 m  
**Length of the synthetic rope:** 15 m  
**Overall product dimensions (LxWxH):**  
 340 mm x 114 mm x 115 mm  
**Weight:** 13 kg  
**Mounting screws (pcs):** 4  
**Mounting bolt pattern:** 124 mm x 76 mm

### THE SET INCLUDES:

- steel cable or synthetic rope
- hook
- control box
- roller guides
- or aluminum fairlead
- remote control
- and wireless remote control
- mounting screws
- universal mounting plate

### Cable winding speed and power consumption (the first cable layer on the drum)

cable load	kg	453	907	2041	
cable speed	m/min	6,3	5,3	4,5	2,1
power consumption 12 V	amp	23	40	81	160

### Cable winding speed and power consumption (the first cable layer on the drum)

cable load	kg	453	907	2041	
cable speed	m/min	6,3	5,3	4,5	2,1
cable consumption 12 V	amp	23	40	81	160

### Pulling force depending on cable layer

cable layer		1	2	3	4	5
cable pull	kg	2041	1612	1388	1204	1001
cable lenght on the drum	m	3,7	8,1	12,9	18,3	20,0

### Pulling force depending on cable layer

cable layer		1	2	3	4	5
cable pull	kg	2041	1612	1388	1204	1001
cable lenght on the drum	m	2,3	4,9	8,0	11,4	15,0

# DRAGON WINCH

## series HIGHLANDER



### DWH 3500 HD

**Dedicated for:** ATV/UTV  
**Voltage:** 12 V  
**Motor:** 1,6 hp  
**Pulling rate:** 3500 lb / 1588 kg  
**Gear train:** 3 stage planetary  
**Reduction ratio:** 138:1  
**Brake:** automatic  
**Length of the steel cable:** 15 m  
**Length of the synthetic rope:** 15 m  
**Overall product dimensions (LxWxH):**  
 354 mm x 114 mm x 115 mm  
**Weight:** 12 kg  
**Mounting screws (pcs):** 4  
**Mounting bolt pattern:** 124 mm x 76 mm



### DWH 3000 HD

**Dedicated for:** ATV/UTV  
**Voltage:** 12 V  
**Motor:** 1,4 hp  
**Pulling rate:** 3000 lb / 1360 kg  
**Gear train:** 3 stage planetary  
**Reduction ratio:** 138:1  
**Brake:** automatic  
**Length of the steel cable:** 15 m  
**Length of the synthetic rope:** 15 m  
**Overall product dimensions (LxWxH):**  
 346 mm x 114 mm x 115 mm  
**Weight:** 12 kg  
**Mounting screws (pcs):** 4  
**Mounting bolt pattern:** 124 mm x 76 mm

#### THE SET INCLUDES:

- steel cable or synthetic rope
- hook
- control box
- roller guides
- or aluminum fairlead
- universal mounting plate
- switch on the steering wheel and wireless remote control
- mounting screws

#### THE SET INCLUDES:

- steel cable or synthetic rope
- hook
- control box
- roller guides
- or aluminum fairlead
- universal mounting plate
- switch on the steering wheel and wireless remote control
- mounting screws

#### Cable winding speed and power consumption (the first cable layer on the drum)

cable load	kg	453	907	1587	
cable speed	m/min	5,4	4,8	4,0	3,0
power consumption 12 V	amp	19	49	96	150

#### Cable winding speed and power consumption (the first cable layer on the drum)

cable load	kg	453	907	1360	
cable speed	m/min	4,9	4,3	3,5	2,8
power consumption 12 V	amp	18,7	50	101	135

#### Pulling force depending on cable layer

cable layer		1	2	3	4	5
cable pull	kg	1587	1254	1079	967	778
cable length on the drum	m	2,5	5,3	8,4	12,2	15,0

#### Pulling force depending on cable layer

cable layer		1	2	3	4	5
cable pull	kg	1360	1074	925	802	666
cable length on the drum	m	2,6	5,4	8,6	12,4	15,0



**DRAGON**  
WINCH

PAŃSTWOWA STRAŻ  
POŻARNA  
JRG - ŁABĘDY

# DRAGON WINCH EN

Winches compliant with EN 14492-1 Standard  
intended for:



special vehicles



tow trucks, industrial vehicles

# DRAGON WINCH series EN



## DWT 18500 HD EN

**Dedicated for:** special trucks,  
tow trucks / industrial vehicles

**Voltage:** 24 V

**Motor:** 10,5 hp

**Pulling rate:** 18500 lb / 8389 kg

**Reduction ratio:** 463:1

**Gear train:** 3 stage planetary

**Brake:** dynamic

**Length of the steel cable:** 30 m

**Overall product dimensions (LxWxH):**

745 mm x 217 mm x 271 mm

**Weight:** 91 kg

**Mounting screws (pcs):** 8

**Mounting bolt pattern:** 365 mm x 114 mm

/ 365 mm x 164 mm

### THE SET INCLUDES:

- steel cable
  - hook
  - control box
  - cable tensioner
  - roller guides
  - remote control
- and wireless remote control
- mounting screws
  - safety switch 300A



## DWHI 18500 HD EN

**Dedicated for:** special trucks, tow trucks /  
industrial vehicles

**Power:** hydraulic

**Pulling rate:** 18500 lb / 8389 kg

**Pulling force depending on steel cable layer:**

- first layer of cable: 8389 kg

- last layer of cable: 5552 kg

**Steel cable winding speed:**

- first layer of steel cable: 4,4 m / min

- last layer of steel cable: 6,1 m / min

**Max oil pressure:** 17,5 Mpa

**Max oil flow:** 60 l / min

**Overall product dimensions (LxWxH):**

700 mm x 271 mm x 220 mm

**Drum capacity:** 31 m

**Number of steel cable layers:** 3

**Weight:** 105 kg

### THE SET INCLUDES:

- steel cable
- hook
- mounting screws
- rope tensioner

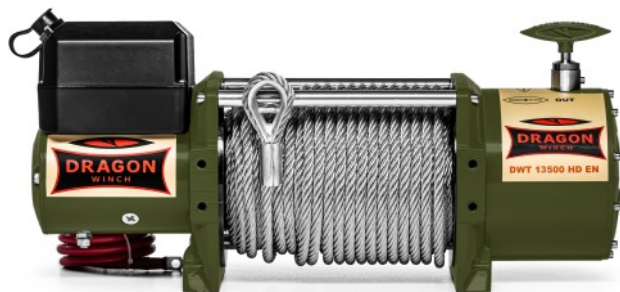
### Cable winding speed and power consumption (the first cable layer on the drum)

cable load	kg	2721	5443	8389	
cablespeed	m/min	5,0	4,0	3,3	1,9
power consumption 24 V	amp	50	124	248	320

### Pulling force depending on cable layer

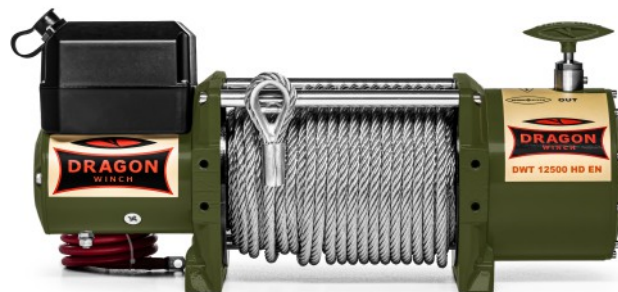
cable layer		1	2	3
cable pull	kg	8389	6450	5552
cable lenght on the drum	m	11	23,5	30

# DRAGON WINCH series EN



## DWT 13500 HD EN

**Dedicated for:** special trucks  
**Voltage:** 12 V or 24 V  
**Motor:** 7,8 hp  
**Pulling rate:** 13500 lb / 6123 kg  
**Gear train:** 3 stage planetary  
**Reduction ratio:** 358:1  
**Brake:** dynamic  
**Length of the steel cable:** 30 m  
**Overall product dimensions (LxWxH):**  
 574 mm x 196 mm x 266 mm  
**Weight:** 57 kg  
**Mounting screws (pcs):** 4  
**Mounting bolt pattern:** 254 mm x 114 mm



## DWT 12500 HD EN

**Dedicated for:** special trucks  
**Voltage:** 12 V or 24 V  
**Motor:** 7,8 hp  
**Pulling rate:** 12500 lb / 5668 kg  
**Gear train:** 3 stage planetary  
**Reduction ratio:** 358:1  
**Brake:** dynamic  
**Length of the steel cable:** 30 m  
**Overall product dimensions (LxWxH):**  
 574 mm x 196 mm x 266 mm  
**Weight:** 55 kg  
**Mounting screws (pcs):** 4  
**Mounting bolt pattern:** 254 mm x 114 mm

### THE SET INCLUDES:

- steel cable
- hook
- control box
- roller guides
- remote control
- and wireless remote control
- mounting screws
- safety switch 300A
- cable tensioner

### THE SET INCLUDES:

- steel cable
- hook
- control box
- roller guides
- remote control
- and wireless remote control
- mounting screws
- safety switch 300A
- cable tensioner

### Cable winding speed and power consumption (the first cable layer on the drum)

cable load	kg	1814	3629	6123
cable speed	m/min	5,7	4,4	2,0
power consumption 12 V	amp	68	157	280
power consumption 24 V	amp	40	89	157

### Cable winding speed and power consumption (the first cable layer on the drum)

cable load	kg	1814	3629	5668
cable speed	m/min	5,7	4,4	2,0
power consumption 12 V	amp	68	157	280
power consumption 24 V	amp	40	89	157

### Pulling force depending on cable layer

cable layer		1	2	3	4
cable pull	kg	6123	4837	4163	3613
cable length on the drum	m	4,8	12,0	21,0	30,0

### Pulling force depending on cable layer

cable layer		1	2	3	4
cable pull	kg	5443	4477	3854	3344
cable length on the drum	m	4,8	12,0	21,0	30,0



# **DRAGON WINCH PORTABLE AND ANCHOR WINCHES**

PORTABLE WINCHES ARE  
FOR UNIVERSAL USE.  
DEDICATED FOR:



# DRAGON WINCH PORTABLE WINCHES

## DWP 5000



**Dedicated for:** boats

**Voltage:** 12 V

**Motor:** 2,9 hp

**Pulling rate:** 5 000 lb/ 2 267 kg

**Reduction ratio:** 717:1

**Brake:** self-braking

**Length of the steel cable:** 9 m

**Winding/unwinding steel cable:** electric

**Overall product dimensions (LxWxH):** 255 mm x 268 mm x 219mm

**Weight:** 17kg

### THE SET INCLUDES:

- wire rope with hook
- mounting plate
- power cable
- hand crank
- remote control

## DWP 3500

**Dedicated for:** boats

**Voltage:** 12 V

**Motor:** 1,3 hp

**Pulling rate:** 3 500 lb / 1 588 kg

**Reduction ratio:** 717:1

**Brake:** self-braking

**Length of the steel cable:** 10 m

**Winding/unwinding steel cable:** electric

**Overall product dimensions (LxWxH):** 241 mm x 247 mm x 212 mm

**Weight:** 15 kg

### THE SET INCLUDES:

- wire rope with hook
- mounting plate
- power cable
- hand crank
- remote control





# DRAGON WINCH ANCHOR WINCHES

## DWA 50 LS

**Dedicated for:** boats  
**Voltage:** 12 V  
**Other electrical parameters:** 150W/12.5 Amp  
**Pulling rate:** 50 lb/22 kg  
**Breaking Strength:** 286 kg  
**Rope retraction speed:** 20m  
**Cable Length:** 30.5 m.  
**Overall product dimensions (LxWxH):** 255 mm x210 mm x 170 mm  
**Weight:** 8 kg

DEDICATED TO FRESH WATER



## DWA 50 MS

**Dedicated for:** boats  
**Voltage:** 12 V  
**Other electrical parameters:** 150W/12.5 Amp  
**Pulling rate:** 50 lb/22 kg  
**Breaking Strength:** 286 kg  
**Rope retraction speed:** 20m  
**Cable Length:** 30.5 m  
**Overall product dimensions (LxWxH):** 255 mm x210 mm x 170 mm  
**Weight:** 8 kg

DEDICATED TO SALT WATER





**DRAGON**  
WINCH



**DRAGON**  
WINCH

# DRAGON WINCH INDUSTRIAL

THE DRAGON WINCH INDUSTRIAL SERIES – VERY DURABLE  
AND SOLID WINCHES WITH A 230 V POWER SUPPLY.

THE OFFER COMPRISES ALSO:  
ELECTRICAL TROLLEYS  
MANUAL TROLLEYS  
GUIDE RAILS.

# DRAGON WINCH series INDUSTRIAL



## DWI 500/990 HD

**Dedicated for:** workshops  
**Voltage:** 230 V  
**Pulling rate with a single cable:** 500 kg  
**Pulling rate with a double cable:** 990 kg  
**Pulling height:** 12 m / 6 m  
**Brake:** automatic  
**Turn - off switches:** limit switches  
and emergency switches  
**Remote control:** controlling up and down  
**Weight:** 40 kg



## DWI 400/800 HD

**Dedicated for:** workshops  
**Voltage:** 230 V  
**Pulling rate with a single cable:** 400 kg  
**Pulling rate with a double cable:** 800 kg  
**Pulling height:** 12 m / 6 m  
**Brake:** automatic  
**Turn - off switches:** limit switches  
and emergency switches  
**Remote control:** controlling up and down  
**Weight:** 18,5 kg



## DWI 300/600 HD

**Dedicated for:** workshops  
**Voltage:** 230 V  
**Pulling rate with a single cable:** 300 kg  
**Pulling rate with a double cable:** 600 kg  
**Pulling height:** 12 m / 6 m  
**Brake:** automatic  
**Turn - off switches:** limit switches  
and emergency switches  
**Remote control:** controlling up and down  
**Weight:** 17,5 kg



## DWI 125/250 HD

**Dedicated for:** workshops  
**Voltage:** 230 V  
**Pulling rate with a single cable:** 125 kg  
**Pulling rate with a double cable:** 250 kg  
**Pulling height:** 12 m / 6 m  
**Brake:** automatic  
**Turn - off switches:** limit switches  
and emergency switches  
**Remote control:** controlling up and down  
**Weight:** 12 kg

## WINCHES 230V WITH WIRELESS REMOTE



DWI 500/990  
DWI 300/600



# DRAGON WINCH series INDUSTRIAL



## DWI 1 T ELECTRICAL TROLLEY 1 T

**Dedicated for:** workshops  
**Nominal lifting:** 1 T  
**Standard operating height:** 3 m  
**Weight:** 19 kg



## DWI 0,5 T ELECTRICAL TROLLEY 0,5 T

**Dedicated for:** workshops  
**Nominal lifting:** 0,5 T  
**Standard operating height:** 3 m  
**Weight:** 19 kg



## DWI 1 T MANUAL TROLLEY 1 T

**Dedicated for:** workshops  
**Nominal lifting:** 1 T  
**Standard operating height:** 3 m  
**Weight:** 12 kg



## DWI 0,5 T MANUAL TROLLEY 0,5 T

**Dedicated for:** workshops  
**Nominal lifting:** 0,5 T  
**Standard operating height:** 3 m  
**Weight:** 5 kg

## WIRELESS CONTROL





# DRAGON WINCH HAND CRANK

WINCHES WITH A STRONG STEEL CONSTRUCTION.  
INTENDED FOR PULLING:

# DRAGON WINCH series HAND CRANK



## DWK 35 C

**Dedicated for:** workshops,  
tow trucks / industrial vehicles, boats  
**Max. pulling rate:** 3 500 lb / 1 588 kg  
**Length of the steel cable:** 10 M.  
**Weight:** 7



## DWK 25 C

**Dedicated for:** workshops,  
tow trucks / industrial vehicles, boats  
**Max. pulling rate:** 2 500 lb / 1 133 kg  
**Length of the steel cable:** 10 M.  
**Weight:** 6 kg

### Winches with friction brake



## DWKO 2600 HD

**Dedicated for:** workshops,  
tow trucks / industrial vehicles, boats  
**Max. pulling rate:** 2 600 lb / 1 200 kg  
**Length of the steel cable:** 17 M.  
**Weight:** 12 kg



## DWKO 1800 HD

**Dedicated for:** workshops,  
tow trucks / industrial vehicles, boats  
**Max. pulling rate:** 1800 lb / 810 kg  
**Length of the steel cable:** 10 m.  
**Weight:** 9 kg



## DWKO 1200 HD

**Dedicated for:** workshops,  
tow trucks / industrial vehicles, boats  
**Max. pulling rate:** 1200 lb / 540 kg  
**Length of the steel cable:** 10 m.  
**Weight:** 4,5 kg



## DWKO 800 HD

**Dedicated for:** workshops,  
tow trucks / industrial vehicles, boats  
**Max. pulling rate:** 800 lb / 360 kg  
**Length of the steel cable:** 10 m.  
**Weight:** 3,4 kg



# DRAGON WINCH series HAND CRANK



## DWK 35 V

2-speed winch

**Dedicated for:** workshops,  
tow trucks / industrial vehicles, boats  
**Max. pulling rate:** 3 500 lb/ 1 588 kg  
**Length of the steel cable:** 10 m  
**Weight:** 5,7 kg



## DWK 25 V

2-speed winch

**Dedicated for:** workshops,  
tow trucks / industrial vehicles, boats  
**Max. pulling rate:** 2 500 lb / 1 133 kg  
**Length of the steel cable: /belt:** 10 m  
**Weight:** 5 kg



## DWK 25

**Dedicated for:** workshops,  
tow trucks / industrial vehicles, boats  
**Max. pulling rate:** 2 500 lb/ 1 133 kg  
**Length of the steel cable: /belt:** 10 m.  
**Weight:** 5 kg



## DWK 16

**Dedicated for:** workshops,  
tow trucks / industrial vehicles, boats  
**Max. pulling rate:** 1 600 lb/ 725 kg  
**Length of the steel cable: /belt:** 10 m.  
**Weight:** 3,4 kg



## DWK 12

**Dedicated for:** workshops,  
tow trucks / industrial vehicles, boats  
**Max. pulling rate:** 1200 lb/ 540 kg  
**Length of the steel cable: /belt:** 10 m.  
**Weight:** 3,2 kg



## DWK 10

**Dedicated for:** workshops,  
tow trucks / industrial vehicles, boats  
**Maximum pull:** 1000 lb/ 450 kg  
**Strap/rope length:** 7,70 m  
**Weight:** 2,5 kg



## DWK 8

**Dedicated for:** workshops,  
tow trucks / industrial vehicles, boats  
**Maximum pull:** 800 lb/ 365 kg  
**Strap/rope length:** 6,30 m  
**Weight:** 2 kg



**DRAGON WINCH**  
**CHAIN WINCHES**



# DRAGON WINCH CHAIN WINCHES



**DWI CB 1T 6M**

**Load capacity:** 1T  
**Lifting height:** 6 M  
**Weight:** 16,5 kg



**DWI CB 1T 3M**

**Load capacity:** 1T  
**Lifting height:** 3 m  
**Weight:** 12 kg



**DWI CB 3T 3M**

**Load capacity:** 3T  
**Lifting height:** 3 m  
**Weight:** 21,5 kg



**DWI CB 3T 6M**

**Load capacity:** 3T  
**Lifting height:** 6 m  
**Weight:** 30 kg



# DRAGON WINCH ACCESSORIES

THE OFFER COMPRISES SPARE PARTS AND ACCESSOIRES  
FOR ALL DRAGON WINCH MODELS.

SELECTED ACCESSOIRES ARE SHOWN IN THE CATALOGUE.

# DRAGON WINCH ACCESSORIES



## ROPE HOOK

**Available:**

- 16000-22000 lbs
- 10000-14000 lbs
- ATV



## TREE BELT

**Available:**

- 20 m 5 T
- 9 m 8 T
- 3 m 9 T
- 1,5 m 9 T
- 1,5 m 4 T



## SNATCH BLOCK

**Available:**

- 15 T
- 10 T
- 8 T
- 4 T



## SNATCH BLOCK WITH ATV HOOK

**Available:**

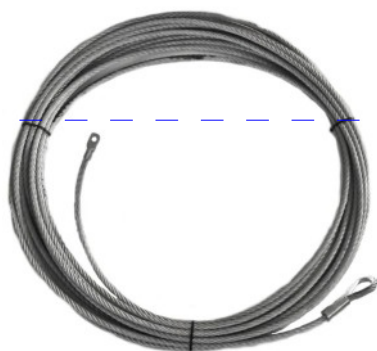
- 2 T



## STEEL CABLE

**Available:**

- 16000-22000 lbs
- 9000-14000 lbs
- 10000 lbs
- ATV 20 m
- ATV 15 m



## SHACKLE

**Available:**

- shackle 1/1 8,5 T
- shackle 7/8 6,5 T
- shackle 3/4 4,75 T
- shackle 5/8 3,25 T



## KINETIC ROPE

**Available:**

- 28mm 12m 22 T
- 28mm 10m 15,5 T
- 28mm 8m 15,5 T
- 28mm 6m 15,5 T



## SYNTETIC ROPE

**Available:**

- 4x4 9000-13000 lbs
- 11 mm 16000 lbs
- 12 mm 18000-22000 lbs
- 9000-13000 lbs (in protective sleeve)
- 16000-18000 lbs (in protective sleeve)
- ATV



THE OFFER COMPRISES ALSO SPECIAL ROPES  
- LENGHT, PULLING RATE AND DIAMETER IN ACCORDANCE WITH CUSTOMER NEEDS.



# DRAGON WINCH ACCESSORIES

## MOUNTING PLATE 4X4

- 12000-13000 lbs (series DWM)



## MOUNTING PLATE 4X4 PORTABLE

- Portable
- Mounted in the place of the hook



## MOUNTING PLATE

### UNIVERSAL

- DWT 14000-18000
- DWH 9000-15000



## MOUNTING PLATE

### UNIVERSAL

- ATV



## ROPE DAMPENER



## ROLLER GUIDES



## FAIRLEAD



# DRAGON WINCH ACCESSORIES



## PILOT STORM DUAL CONTROL

- Lithium-ion battery
- USB-C charging
- Automatic shut-off
- Powerful flashlight
- Built-in magnets
- Battery indicator light



## BAG 4X4

- Tree belt 3 m
- 2 x shackle 7/8
- Snatch block 8T
- Gloves



## WINCH COVER

### Available:

- TRUCK
- 4X4
- ATV
- Farm Jack
- Hand crank winches



## FARM JACK

### Dostępne:

- Farm Jack 48
- Farm Jack 60

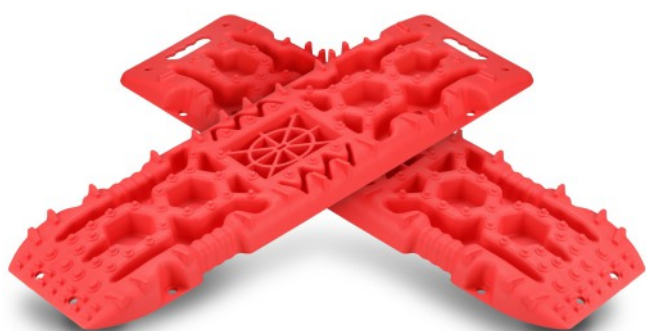


## AIR DEFLATOR



## TRAPS

Traps are made of strengthened plastic. Ideal for use in swampy areas. Sold in double pack.



## HIGH-CURRENT CONNECTORS



10000-22000 lbs  
ATV

## SAFETY SWITCH



200A  
300 A  
450 A

# DRAGON WINCH COMPRESSORS



## DWK-T 300

**Voltage:** 12 V  
**Max. amperage:** 90 amp  
**Max. pressure:** 150 PSI  
**Performance:** 300 l/min  
**Continuous operation time:** max 15 min  
**Weight:** 7,35 kg



## DWK-T 160

**Voltage:** 12 V  
**Max. amperage:** 45 amp  
**Max. pressure:** 150 PSI  
**Performance:** 160 l/min  
**Continuous operation time:** max 15 min  
**Weight:** 7,35 kg



## DWK-SL

**Voltage:** 12 V  
**Max. pressure:** 150 PSI  
**Performance:** 60 l/min  
**Continuous operation time:** max 15 min  
**Weight:** 2,8 kg



## DWK-M 150 HD

**Voltage:** 12 V  
**Max. amperage:** 23 amp  
**Max. pressure:** 150 PSI  
**Performance:** 35 l/min  
**Continuous operation time:** max 15 min



## DWK-M 100 HD

**Voltage:** 12 V  
**Max. amperage:** 12 amp  
**Max. pressure:** 100 PSI  
**Performance:** 35 l/min  
**Continuous operation time:** max 15 min  
**Weight:** 1,5 kg



## DWK-T 200 PREMIUM

**Voltage:** 12 V  
**Max. pressure:** 150 PSI  
**Max. amperage:** 45 Amp  
**Performance:** 180 l/min



## DWK-DUAL

**Voltage:** 12 V  
**Max. pressure:** 150 PSI  
**Performance:** 60 l/min



## DWK-AKUM 150

**Voltage:** 12 V  
**Max. pressure:** 150 PSI  
**Weight:** 1,5 kg



## DWK AKUM 30

**Voltage:** DC 11.1V / DC 12V  
**Battery Capacity:** 2000mAh x3  
**Power:** 80W  
**Pressure:** 150 PSI  
**Charging Time:** 4-5 hours  
**Performance:** max 30min  
**Weight:** 0,8 kg



## DWK AKUM 25

**Voltage:** DC 7.4V  
**Battery Capacity:** 2000mAh x2  
**Power:** 50W  
**Max. pressure:** 150 PSI  
**Charging times:** 3-4 hours  
**Performance:** max 25min  
**Weight:** 0,5 kg

# DRAGON WINCH

## COMPRESSORS PROFESSIONAL



### DWK-PS 500 SHD PORTABLE

**Voltage:** 12 V  
**Max. amperage:** 35 Amp  
**Max. pressure:** 200 PSI  
**Operation time:** max 60 min  
**Performance:** 108 l/min  
**Weight:** 7 kg



### DWK-PS 500 SHD SOLID

**Voltage:** 12 V  
**Max. amperage:** 23 Amp  
**Max. pressure:** 200 PSI  
**Operation time:** max 60 min  
**Performance:** 50 l/min  
**Weight:** 6 kg



### DWK-PS 150 SHD TANK

**Voltage:** 12 V  
**Max. amperage:** 16 Amp  
**Max. pressure:** 150 PSI  
**Operation time:** max 25 min  
**Performance:** 38 l/min  
**Weight:** 5,5 kg



### DWK-PS 150 SHD PORTABLE

**Voltage:** 12 V  
**Max. amperage:** 16 Amp  
**Max. pressure:** 150 PSI  
**Operation time:** max 25 min  
**Performance:** 54 l/min  
**Weight:** 3 kg



### DWK-PS 150 SHD SOLID

**Voltage:** 12 V  
**Max. amperage:** 16 Amp  
**Max. pressure:** 150 PSI  
**Operation time:** max 25 min  
**Performance:** 38 l/min  
**Weight:** 2,3 kg



### DWK-PS 50 SHD TREK

**Voltage:** 12 V  
**Max. pressure:** 150 PSI  
**Performance:** 20 l/min  
**Weight:** 1 kg

### WE OFFER SPARE PARTS FOR ALL WINCHES



This offer does not constitute an offer within the meaning of the Civil Code and other legal provisions. The information contained in this catalogue is provided for information purpose only. The manufacturer reserves the right to make changes without notice and without incurring obligation.



**DRAGON**  
WINCH



[www.dragonwinch.com](http://www.dragonwinch.com)